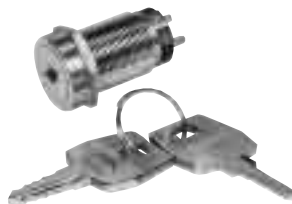
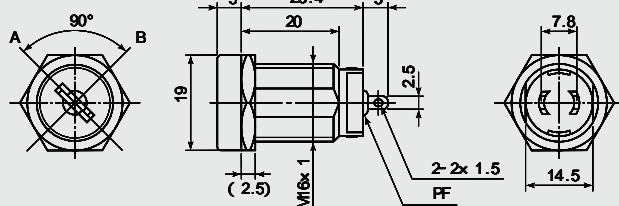


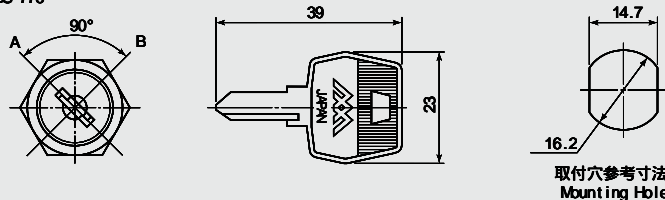
DS-775
DS-776



DS-775



DS-776



DS-775..鍵はA位置だけで抜き差しが可能です。(キーロック式)

[キーは同番と連番(鍵違い)があります。]

DS-776..鍵はA及びB位置の2ヵ所で抜き差しができます。

[キーは同番と連番(鍵違い)があります。]

DS-775..Key removable in OFF (A) position only(ON(B) position Lock Key Type.)

(Key switch with same key No. is also available.)

DS-776..Key removable both in OFF and ON(" A " & " B ") positions.

(Key switch with same key No. is also available.)

| 品番 | 回路 | スイッチ特性 | 電流容量 | 絶縁抵抗 | 絶縁耐圧 | 接触抵抗 |
|-----------|-------------|--------------------|----------------------------|--------------------------------|--------------------------------|--------------------|
| PARTS NO. | CIRCUIT | SWITCHING FUNCTION | RATING | INSULATION RESISTANCE | VOLTAGE BREAKDOWN | CONTACT RESISTANCE |
| DS-775 | SPST (2P) | OFF-ON | 3A. 125V.AC 1A. 250V.AC | DC. 500V 100M 以上 (MIN) | AC. 1500V 1分間 (Minute) | 20m 以下 (MAX) |
| DS-776 | | | | | | |