

STEIMEX®

德國施德利

- 獨特之堅硬金屬外殼
- 獨特之入線索頭
- 快速安裝底座
- 高電性10A 250V

LSV -

系列行程開關

Series Limit Switches



型號 Version	LSV-	203	203S	203L	203LS	203RLS	203RL	204	204T	203SRS	203SR	
操作力 Operating Force	(最大) Max.)	OF	500g	500g	160g	230g	250g	200g	500g	500g	250g	200g
回彈力 Release Force	(最小) Min.)	RF	50g	50g	50g	50g	50g	50g	50g	50g	50g	50g
預行程 Pre-Travel	(最大) Max.)	PT	2.0mm	2.0mm	14mm	10mm	8.0mm	9.0mm	9.0mm	2.0mm	8.0mm	11.0mm
觸發位置 Tripping Position		TP	2.2mm	2.2mm	14.5mm	10.3mm	8.3mm	9.3mm	2.2mm	2.2mm	8.3mm	11.3mm
行程移動分辨率 Movement Differential	(最大) Max.)	MD	0.8mm	0.8mm	1.8mm	1.6mm	1.6mm	1.7mm	0.8mm	0.8mm	1.6mm	2.4mm
觸後行程 Over Travel		OT	4.0mm	4.0mm	3.0mm	2.5mm	2.5mm	2.5mm	4.0mm	4.0mm	2.5mm	3.5mm
累積總行程 Total Travel	(最小) Min.)	TT	6.0mm	6.0mm				6.0mm	6.0mm			

Electrical Parameters 電性參數

Double Break Mechanism

INO+INC snap action 快速機芯

單斷開機械功用

Rated Voltage / Current : 10(4)A, 125, 250VAC

額定電壓 / 電流 6(2)A, 380VAC

For inductance Load, $\text{Cos}\phi=0.4$

Contact Resistance

接觸電阻 Initial < 10mΩ, after testing < 30mΩ

Insulation Voltage

絕緣電壓 Min. 100MΩ at 500VDC

Dielectric Strength

電介強度 AC 2000 VAC / Minute for exposed metal / terminals, ground and between opposite poles

Electrical Life

電性壽命 300,000 at 10A 250VAC Resistive

Mechanical Life

機械壽命 20,000,000

Operating Speed

操作速度 120 Cycles / Minute Max; 1-150mm / second

Degree of Protection

防水防塵能力 IP66 (防壓水柱級)

Ambient Temperature Rised

上升溫度 Max 30℃ over ambient temperature at rated voltage / current

Conformed Standards

合乎標準 Cenelec EN 50041, EN 50047, IEC 337-1, VDE 0660

Operating Temperature

操作溫度 -25℃ ~ +80°

Storage Temperature

保存溫度 -25℃ ~ +80°

Humidity

濕度 95% R.H. Max (No dewing)

Shock Resistance

衝擊系數 Free Position 10G
Overtravel Position 30G

Vibration Frequency

振動頻率 55Hz Max

Terminal screw Locking Force

端子螺絲扭力 6-8 kgf-cm

Other Forces

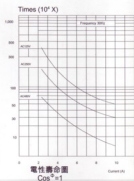
其他螺絲扭力 Cover 12-14 kgf-cm / Head 8-9 kgf-cm / Mounting 50-60 kgf/cm

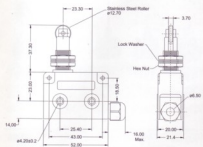
Bare Wire Gauge

裸銅線尺寸 Ø2 Max

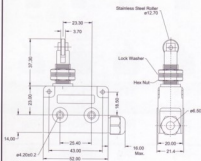
Cable Diameter

電纜尺寸 Ø8 Max (IP 66 If use cable Ø6-8)

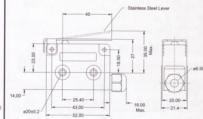




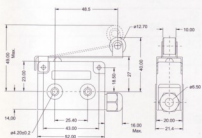
LSV-203



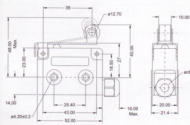
LSV-203S



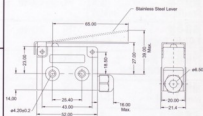
LSV-203LS



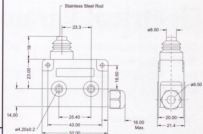
LSV-203RL



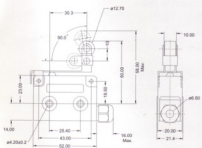
LSV-203RLS



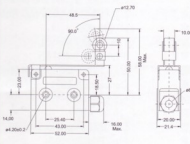
LSV-203L



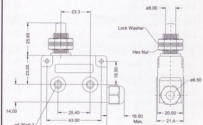
LSV-204



LSV-203SRS



LSV-203SR



LSV-204T