

# STEIMEX®

德國施德利

## LSM -

系列行程開關  
Series Limit Switches

- 纖小型，金屬底壳
- 不銹鋼滾輪，沖頭及彈簧
- 特長2000萬次機械壽命
- 高電性 > 50萬次 10A 250V
- 獨特雙螺絲作軸緊鎖，堅固耐用



型號	LSM-	8104	8107	8108	8111	8112	8122	8166	8169	8181	8191	
Version												
操作力 Operating Force	(最大) (Max.)	OF	500g-cm	500g-cm at L=300mm	500g-cm at L=300mm	900g	900g	900g	90g	90g	90g	400g-cm at L=40mm 200g-cm at L=118mm
回彈力 Release Force	(最小) (Min.)	RF	100g-cm	100g-cm at L=300mm	100g-cm at L=300mm	200g	200g	200g	30g	30g	30g	100g-cm at L=30mm 60g-cm at L=118mm
前預行程 Pre-Travel	(最大) (Max.)	PT	20'	20'	20'	1.8mm	1.8mm	1.8mm	30mm	30mm	30mm	20'
觸發位置 Tripping Position	(±10%)	TP	22.5'	22.5'	22.5'	2.0mm	2.0mm	2.0mm	22.5'	22.5'	22.5'	22.5'
行程移動分辨率 Movement Differential	(最大) (Max.)	MD	10'	10'	10'	1.2mm	1.2mm	1.2mm	14'	14'	14'	10'
觸後行程 Over Travel	(最小) (Min.)	OT	75'	75'	75'	4.0mm	4.0mm	4.0mm	20mm	20mm	20mm	75'
累積總行程 Total Travel	(最小) (Min.)	TT	95'	95'	95'	5.8mm	5.8mm	5.8mm	50mm	50mm	50mm	95'

## Electrical Parameters 電性參數

Double Break Mechanism

雙斷開機械功用

Rated Voltage / Current :

額定電壓 / 電流

INO+INC Force Break snap action 強迫斷開快速機芯

10(4)A, 125, 250VAC

6(2)A, 380VAC

For inductance Load, Cos $\phi$ =0.4

Contact Resistance

Insulation Voltage

Dielectric Strength

接觸電阻

絕緣電壓

電介強度

Initial < 10m $\Omega$ , after testing < 30m $\Omega$

Min. 100M $\Omega$  at 500VDC

AC 2000 VAC / Minute for exposed metal / terminals, ground and between opposite poles

Electrical Life

Mechanical Life

Operating Speed

Degree of Protection

Ambient Temperature Rised

Conformed Standards

Operating Temperature

Storage Temperature

Humidity

Shock Resistance

電性壽命

機械壽命

操作速度

防水防塵能力

上升溫度

合乎標準

操作溫度

保存溫度

濕度

衝擊系數

Min. 500,000 at 10A 250VAC Resistive

Min. 20,000,000

Max. 120 Cycles / Minute Max; 1-150mm / second

IP66 (防壓力水柱級)

Max 30 $^{\circ}$ C over ambient temperature at rated voltage / current

Cenelec EN 50041, EN 50047, IEC 337-1, VDE 0660

-25 $^{\circ}$ C ~ +80 $^{\circ}$

-25 $^{\circ}$ C ~ +80 $^{\circ}$

95% R.H. Max (No dewing)

Free Position 10G

Overtravel Position 30G

Vibration Frequency

Terminal screw Locking Force

Other Forces

Bare Wire Gauge

Cable Diameter

振動頻率

端子螺絲扭力

其他螺絲扭力

裸銅線尺寸

電纜尺寸

55Hz Max

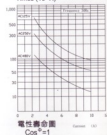
6-8 kgf-cm

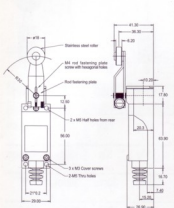
Cover 12-14 kgf-cm / Head 8-9 kgf-cm / Mounting 50-60 kgf/cm

$\varnothing$ 2 Max

$\varnothing$ 9 Max (IP 66 If  $\varnothing$  = 8-9)

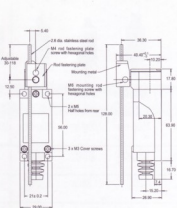
Times (10 $^4$  X)



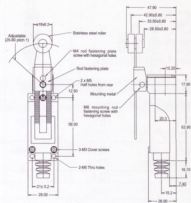


LSM-8104

可選配尼龍滾輪 Nylon Roller LSM-8104P

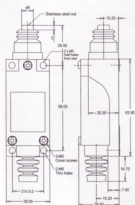


LSM-8107

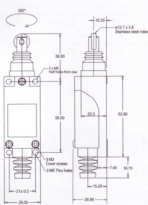


LSM-8108

可選配尼龍滾輪 Nylon Roller LSM-8108P

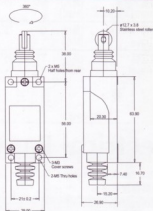


LSM-8111



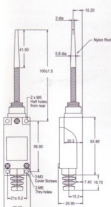
LSM-8112

可轉換滾輪方向成為LSM-8122

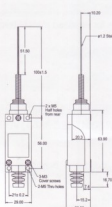


LSM-8122

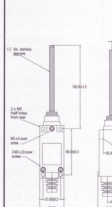
可轉換滾輪方向成為LSM-8111



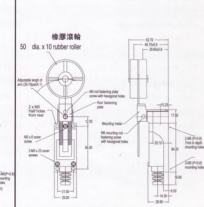
LSM-8166



LSM-8169



LSM-8181



LSM-8191