

STEIMEX®

德國施德利

- 經濟塑料型
- 不銹鋼滾輪，沖頭及彈簧
- 特大±95° 搖臂擺幅
- 可選配PG13.5索頭

LS - LSK-

系列行程開關

Series Limit Switches



型號 Version	LS- LSK-	101 301	103 303	111 311	121 321	127 327	131 331	161 361	171 371	181 381	191 391	
操作力 Operating Force	(最大) (Max.)	OF	700g	700g	700g	500g	700g	500g-cm	100g	100g	100g	350g-cm
回彈力 Release Force	(最小) (Min.)	RF	200g	200g	200g	100g-cm	200g	100g-cm	40g	40g	40g	100g-cm
前預行程 Pre-Travel	(最大) (Max.)	PT	1.8mm	1.8mm	1.8mm	20°	1.8mm	20°	30mm	30mm	30mm	20°
觸發位置 Tripping Position	(±10%)	TP	2.0mm	2.0mm	2.0mm	22.5°	2.0mm	22.5°	22.5°	22.5°	22.5°	22.5°
行程移動分辨率 Movement Differential	(最大) (Max.)	MD	1.2mm	1.2mm	1.2mm	10°	1.2mm	10°	14°	14°	14°	10°
觸後行程 Over Travel	(最小) (Min.)	OT	4.0mm	4.0mm	4.0mm	75°	4.0mm	75°	20mm	20mm	20mm	75°
累積總行程 Total Travel	(最小) (Min.)	TT	5.8mm	5.8mm	5.8mm	95°	5.8mm	95°	50mm	50mm	50mm	95°
搖臂轉動分角度 Rotary Indexing						22.5°		22.5°				22.5°

Electrical Parameters 電性參數

Double Break Mechanism

雙斷開機械功用

Rated Voltage / Current :

額定電壓 / 電流

INO+INC Force Break snap action 強迫斷開快速機芯

10(4)A, 125, 250VAC

6(2)A, 380VAC

For inductance Load, Cos^φ=0.4

Contact Resistance

絕緣電壓

Dielectric Strength

接觸電阻

絕緣電壓

電介強度

Initial < 10mΩ, after testing < 30mΩ

Minute 100MΩ at 500VDC

AC 2000 VAC / Minute for exposed metal / terminals, ground and between opposite poles

Electrical Life

Mechanical Life

Operating Speed

Degree of Protection

Ambient Temperature Rised

Conformed Standards

Operating Temperature

Storage Temperature

Humidity

Shock Resistance

電性壽命

機械壽命

操作速度

防水防塵能力

上升溫度

合乎標準

操作溫度

保存溫度

濕度

衝擊系數

50,000 at 10A 250VAC Resistive

20,000,000

120 Cycles / Minute

IP66 (防壓力水柱級)

Max 30 °C over ambient temperature at rated voltage / current

Cenelec EN 50041, EN 50047, IEC 337-1, VDE 0660

-25 °C ~ + 80°

-25 °C ~ + 80°

95% R.H. Max (No dewing)

Free Position 10G

Overtravel Position 30G

55Hz Max

6-8 kgf-cm

Cover 12-14 kgf-cm / Head 8-9 kgf-cm / Mounting 50-60 kgf/cm

Vibration Frequency

Terminal screw Locking Force

Other Forces

Bare Wire Gauge

Cable Diameter

振動頻率

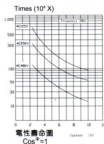
端子螺絲扭力

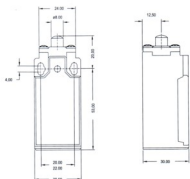
其他螺絲扭力

裸銅線尺寸

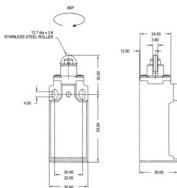
電纜尺寸

Ø12 Max

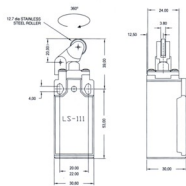




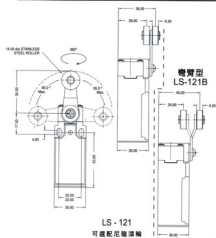
LS - 101



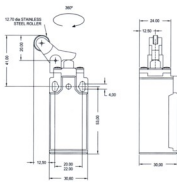
LS - 103



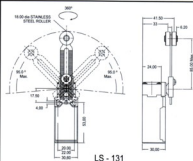
LS - 111



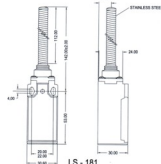
LS - 121
可選配尼龍滾輪



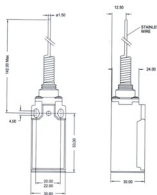
LS - 127



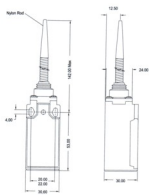
LS - 131



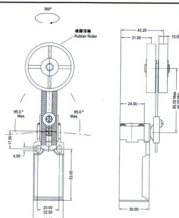
LS - 181



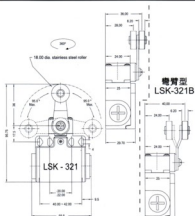
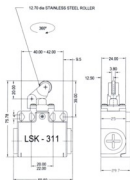
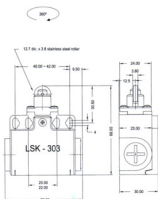
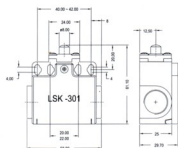
LS 161



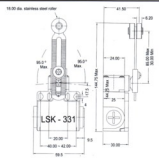
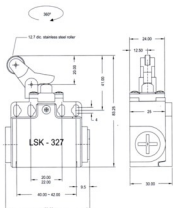
LS 171



LS - 191

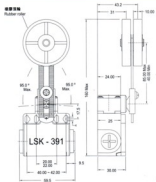
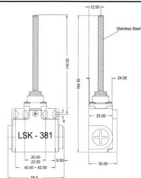
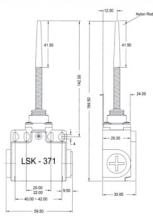
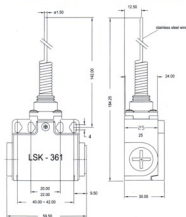


彎臂型
LSK-321B



可選配尼龍滾輪 Nylon Roller LSK-331P

可選配尼龍滾輪 Nylon Roller LSK-321P



橡膠滾輪
Rubber Roller