

# STEIMEX®

德國施德利

- 堅硬金屬外殼，極大搖臂角度±95°
- 特長2000萬次機械壽命
- 不銹鋼滾輪，沖頭及彈簧
- 可選配PG 11索頭

## LSA -

系列行程開關  
Series Limit Switches



| 型號<br>Version                    | LSA-           | 001 | 003   | 012   | 021   | 027     | 031   | 061     | 071   | 081   | 091   |         |
|----------------------------------|----------------|-----|-------|-------|-------|---------|-------|---------|-------|-------|-------|---------|
| 操作力<br>Operating Force           | (最大)<br>(Max.) | OF  | 800g  | 800g  | 800g  | 400g-cm | 800g  | 400g-cm | 150g  | 150g  | 150g  | 350g-cm |
| 回彈力<br>Release Force             | (最小)<br>(Min.) | RF  | 400g  | 400g  | 400g  | 100g-cm | 400g  | 100g-cm | 50g   | 50g   | 50g   | 100g-cm |
| 前預行程<br>Pre-Travel               | (最大)<br>(Max.) | PT  | 1.8mm | 1.8mm | 1.8mm | 20°     | 1.8mm | 20°     | 30mm  | 30mm  | 30mm  | 20°     |
| 觸發位置<br>Tripping Position        | (±10%)         | TP  | 2.0mm | 2.0mm | 2.0mm | 22.5°   | 2.0mm | 22.5°   | 22.5° | 22.5° | 22.5° | 22.5°   |
| 行程移動分辨率<br>Movement Differential | (最大)<br>(Max.) | MD  | 1.2mm | 1.2mm | 1.2mm | 10°     | 1.2mm | 10°     | 14°   | 14°   | 14°   | 10°     |
| 觸後行程<br>Over Travel              | (最小)<br>(Min.) | OT  | 4.0mm | 4.0mm | 4.0mm | 75°     | 4.0mm | 75°     | 20mm  | 20mm  | 20mm  | 75°     |
| 累積總行程<br>Total Travel            | (最小)<br>(Min.) | TT  | 5.8mm | 5.8mm | 5.8mm | 95°     | 5.8mm | 95°     | 50mm  | 50mm  | 50mm  | 95°     |
| 搖臂轉動分角度<br>Rotary Indexing       |                |     |       |       |       | 22.5°   |       | 22.5°   |       |       |       | 22.5°   |

## Electrical Parameters 電性參數

Double Break Mechanism  
雙斷開機械功用

INO+INC Force Break snap action 強迫斷開快速機芯

Rated Voltage / Current :  
額定電壓 / 電流

10(4)A, 125, 250VAC  
6(2)A, 380VAC

For inductance Load,  $\text{Cos}\phi=0.4$

Contact Resistance

接觸電阻 Initial < 10mΩ, after testing < 30mΩ

Insulation Voltage

絕緣電壓 Min. 100MΩ at 500VDC

Dielectric Strength

電介強度 AC 2000 VAC / Minute for exposed metal / terminals, ground and between opposite poles

Electrical Life

電性壽命 500,000 at 10A 250VAC Resistive

Mechanical Life

機械壽命 20,000,000

Operating Speed

操作速度 120 Cycles / Minute Max; 1-150mm / second

Degree of Protection

防水防塵能力 IP66 (防壓力水柱級)

Ambient Temperature Rised

上升溫度 Max 30 °C over ambient temperature at rated voltage / current

Conformed Standards

合乎標準 Cenelec EN 50041, EN 50047, IEC 337-1, VDE 0660

Operating Temperature

操作溫度 -25 °C ~ + 80°

Storage Temperature

保存溫度 -25 °C ~ + 80°

Humidity

濕度 95% R.H. Max (No dewing)

Shock Resistance

衝擊系數 Free Position 10G  
Overtravel Position 30G

Vibration Frequency

振動頻率 55Hz Max

Terminal screw Locking Force

端子螺絲扭力 6-8 kgf-cm

Other Forces

其他螺絲扭力 Cover 12-14 kgf-cm / Head 8-9 kgf-cm / Mounting 50-60 kgf/cm

Bare Wire Gauge

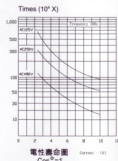
裸銅線尺寸

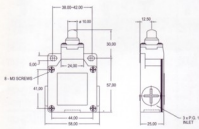
Ø2 Max

Cable Diameter

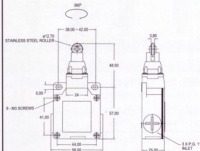
電纜尺寸

Ø12 Max

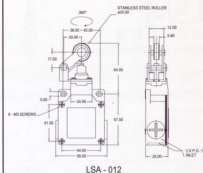




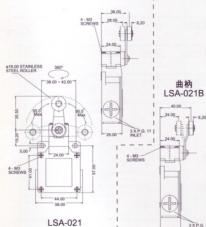
LSA-001



LSA-003

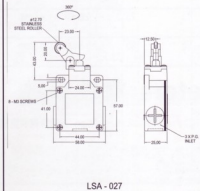


LSA-012

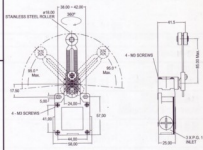


LSA-021

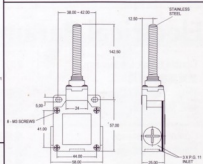
曲納  
LSA-021B



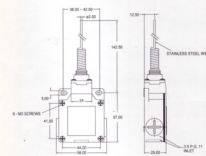
LSA-027



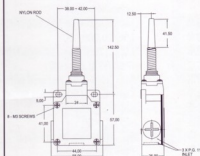
LSA-031



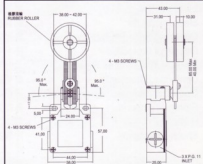
LSA-081



LSA-061



LSA-071



LSA-091