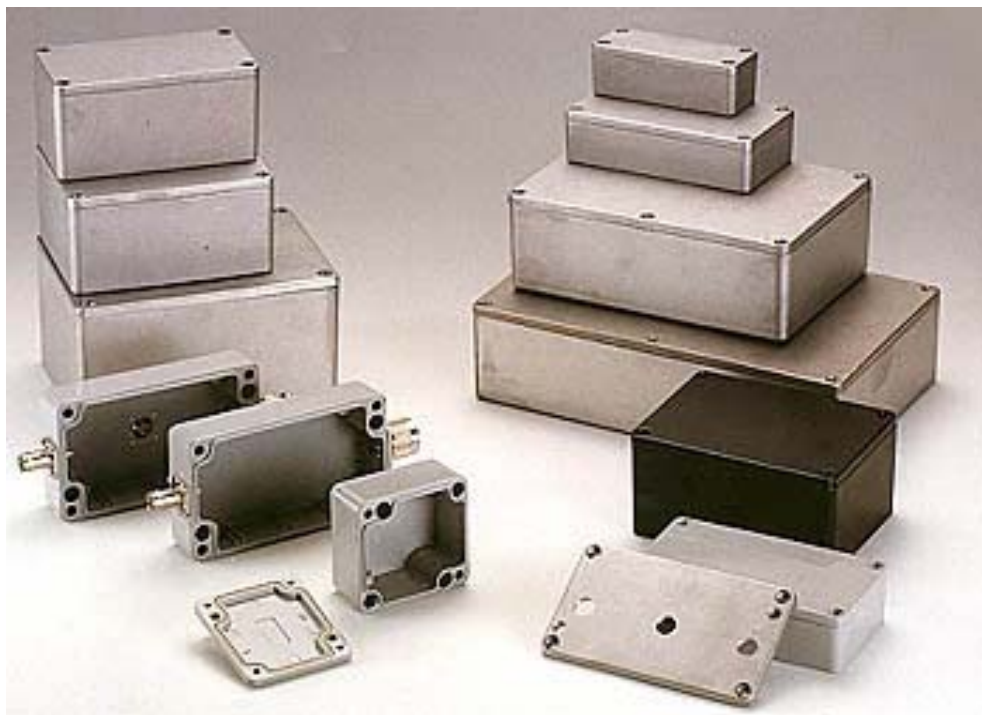


## SEALED DIE-CAST ALUMINIUM ENCLOSURES



**\* DESIGNED TO MEET IP65 AND NEMA4 THROUGH THE USE OF NEOPRENE GASKET WITH THE UNIVERSAL TOUNGE AND GROOVE SEAL SYSTEM.**

**\* IDEAL FOR INDUSTRIAL AND AUTOMATION ENGINEERING.**

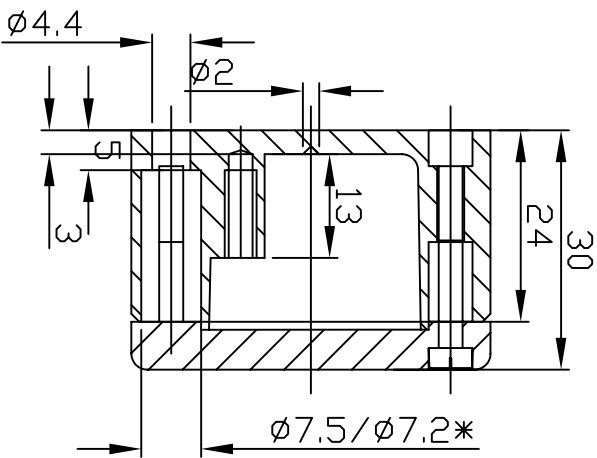
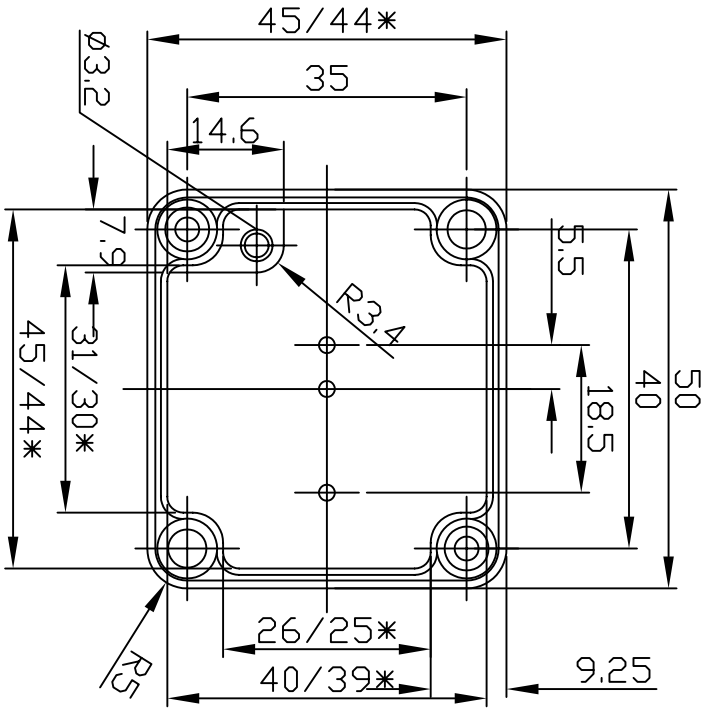
**\* WALL MOUNTING HOLES AND LID FIXING SCREWS ARE OUTSIDE THE SEALING AREA FOR REAL SEALING PROTECTION.**

**\* MATERIAL : ALUMINIUM ALLOY ADC-12 TO JAPAN(JIS)**

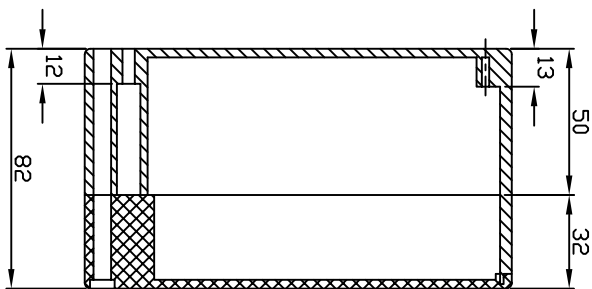
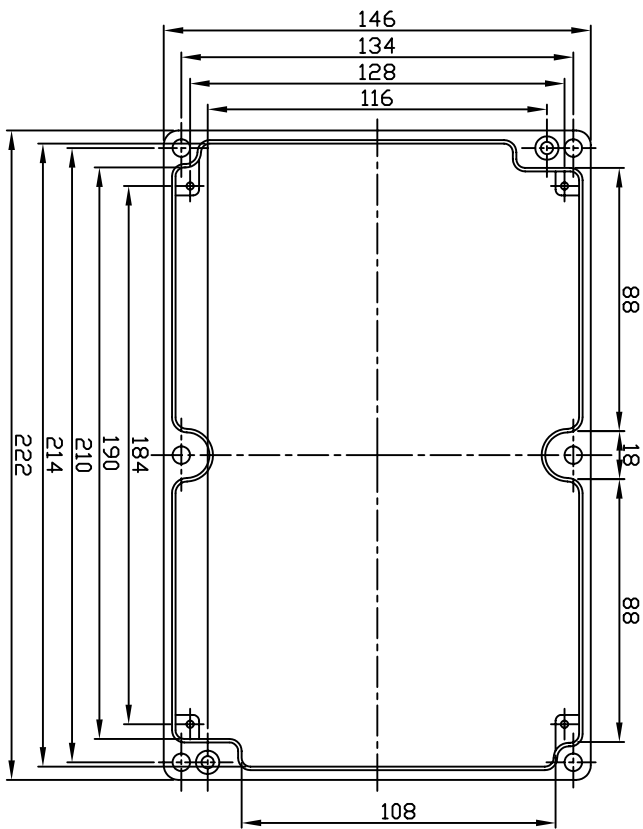
**\* FINISH: NATURAL ALUMINIUM COLOR, COATED LIGHT GRAY FINISH IS AVAILABLE FOR ORDERING.**

Stock No	External Dimensions (mm)	Stock No	External Dimensions (mm)
G101	50 x 45 x 30	G111	115 x 90 x 55
G102	90 x 36 x 30	G115	148 x 108 x 75
G103	98 x 64 x 34	G116	160 x 100 x 60
G104	64 x 58 x 35	G117	160 x 100 x 81
G105	115 x 65 x 30	G120	171 x 121 x 55
G106	125 x 80 x 40	G124	222 x 146 x 55
G107	125 x 80 x 57	G125	222 x 146 x 82
G108	150 x 62 x 36.5	G137	120.5 x 120.5 x 101.5
G109	115 x 65 x 55	G139	158.5 x 158.5 x 101.5

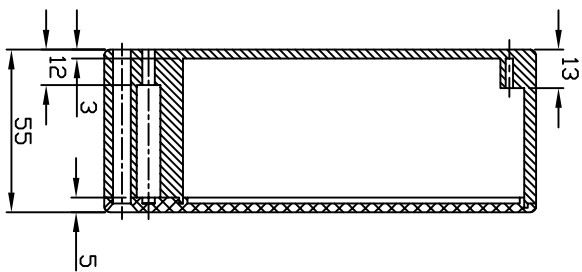
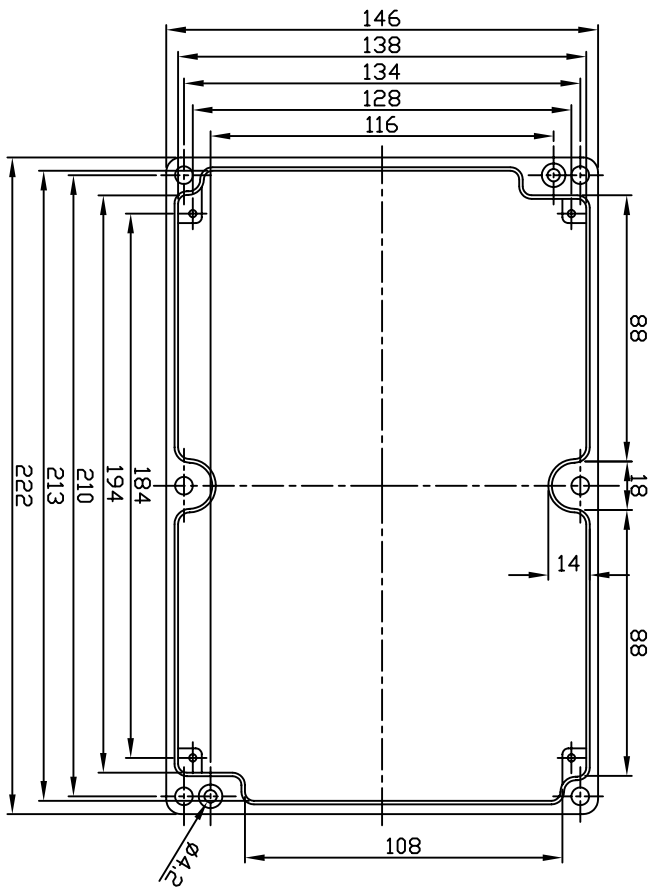
# G101

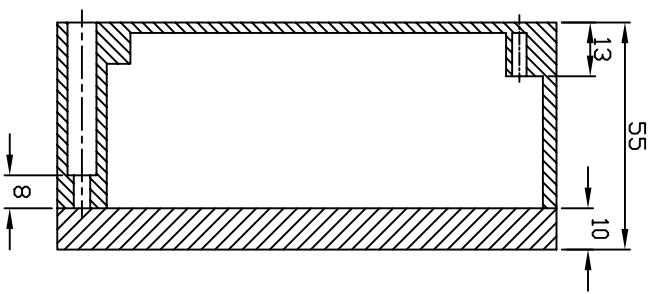
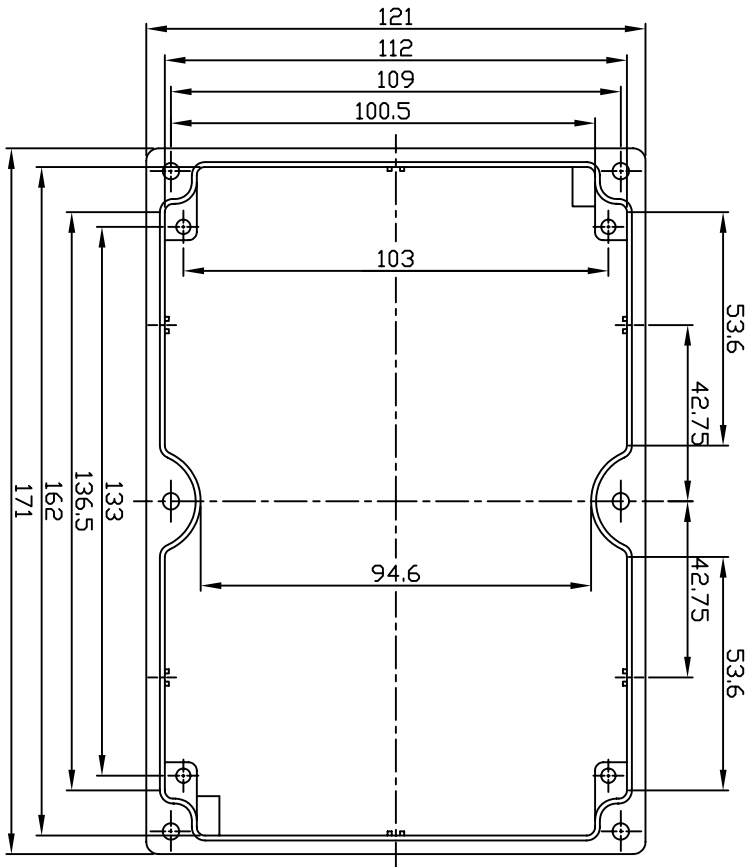


# G125

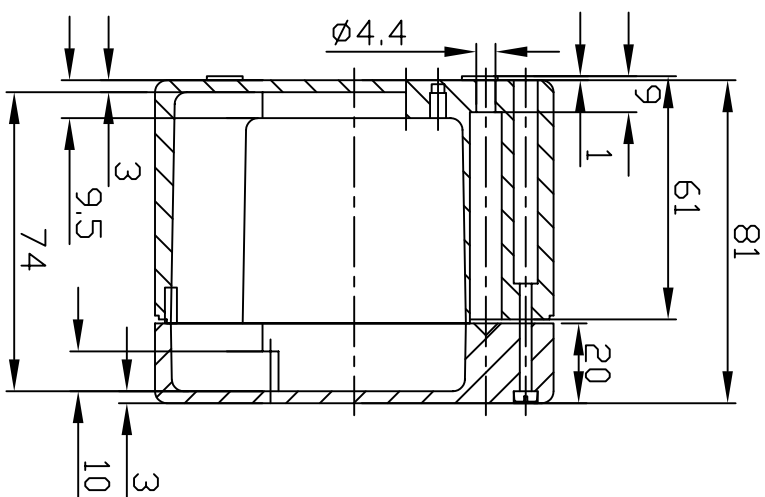
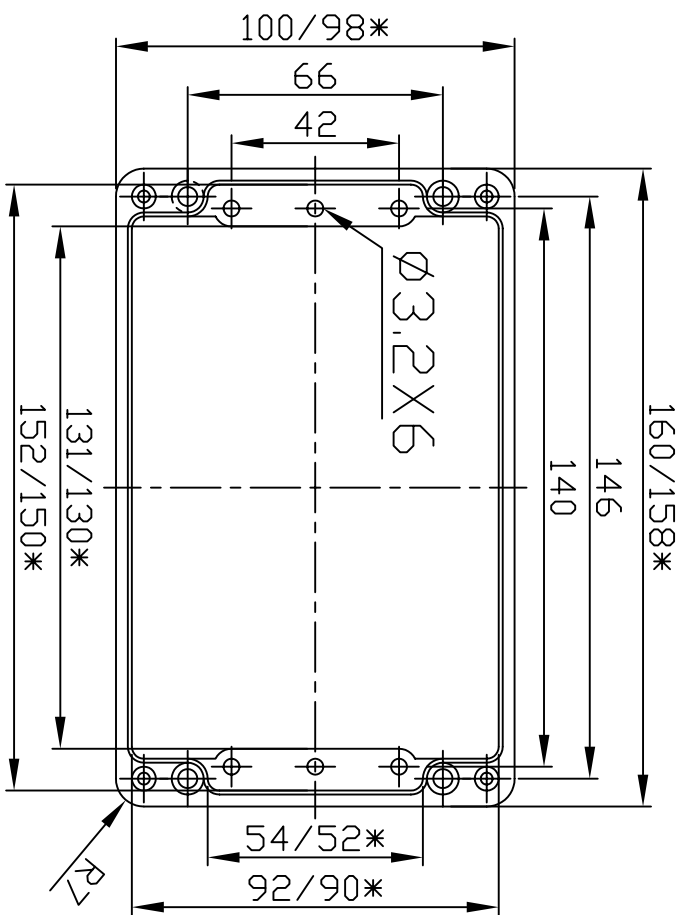


# G124

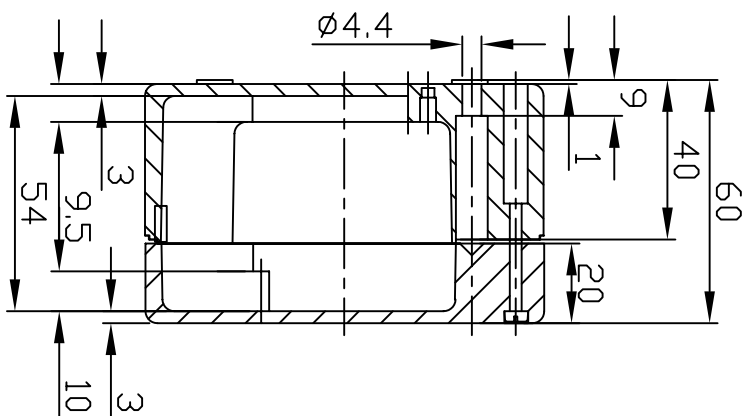
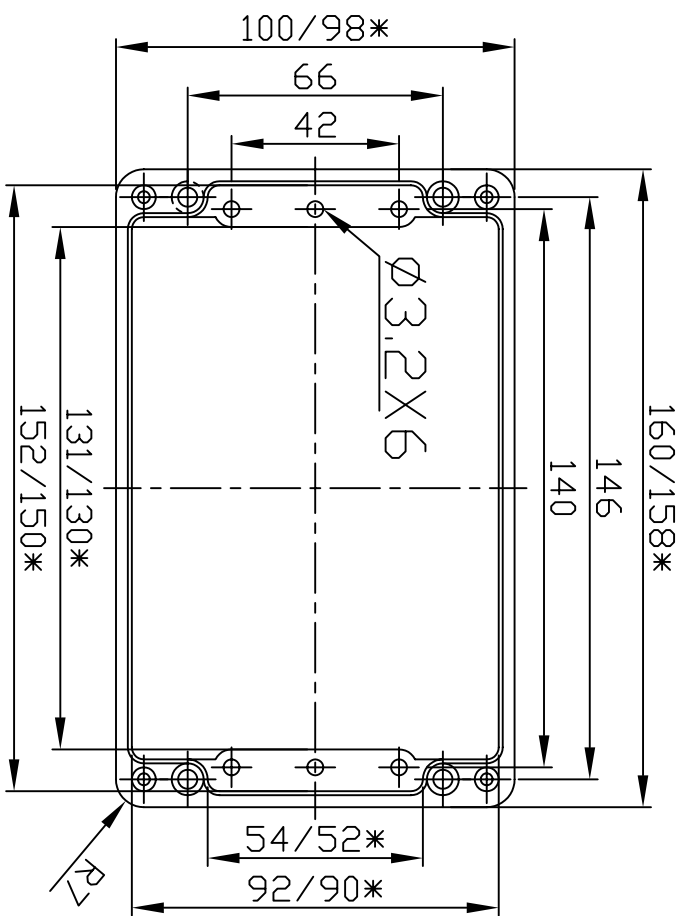




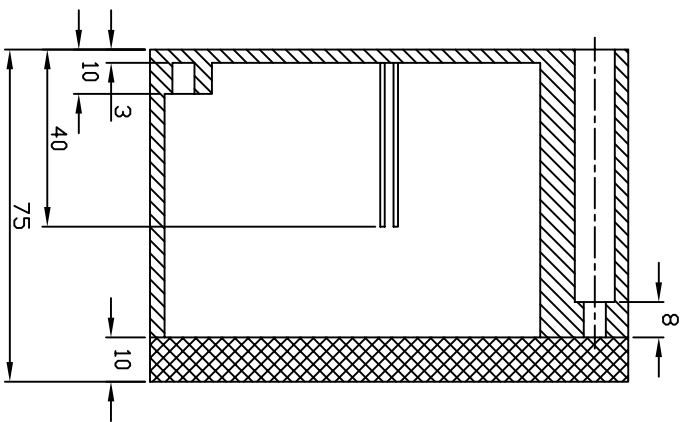
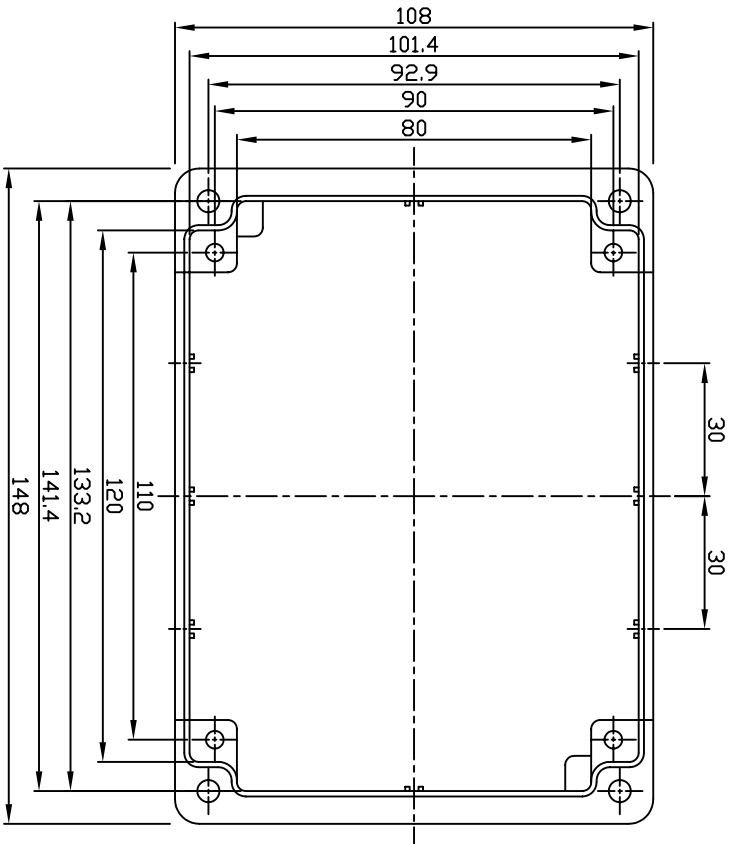
G117



# G116

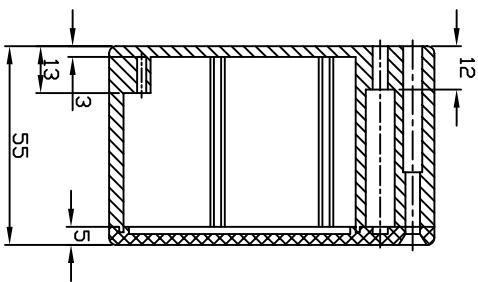
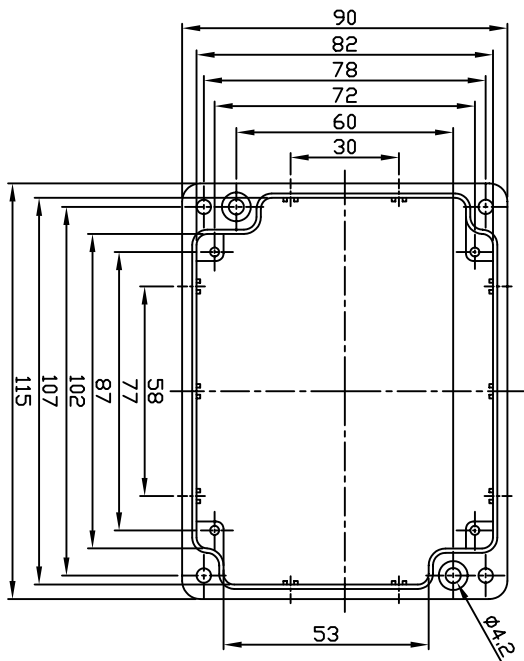


# G115

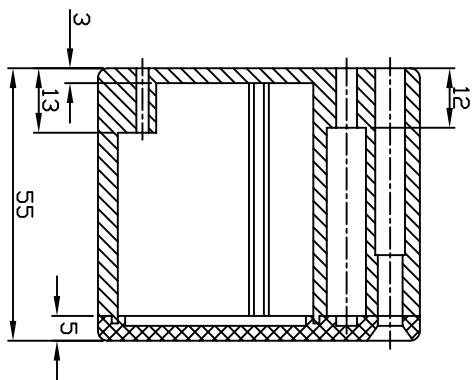
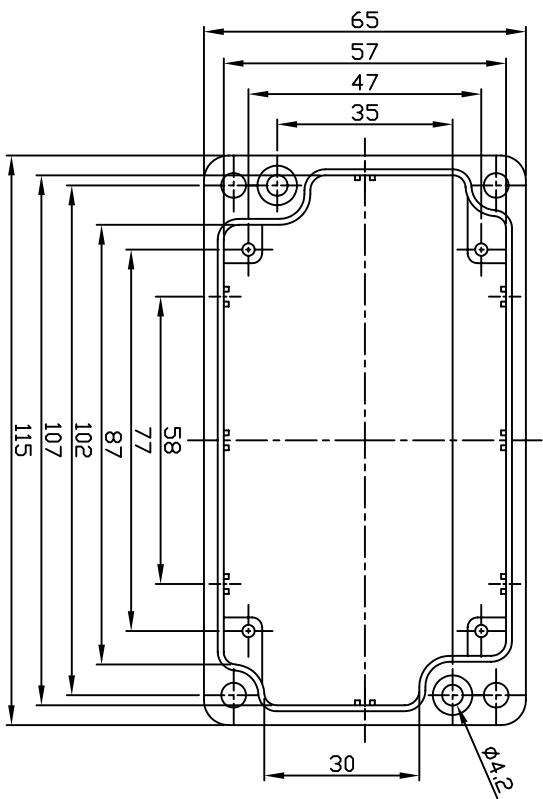


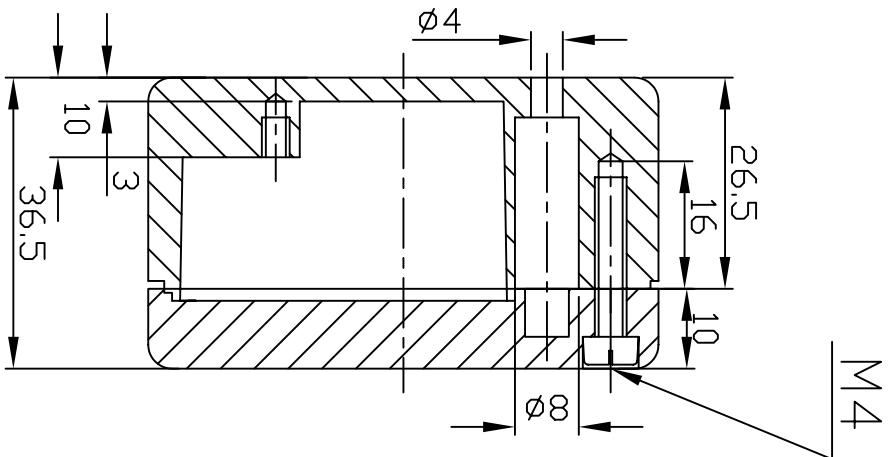
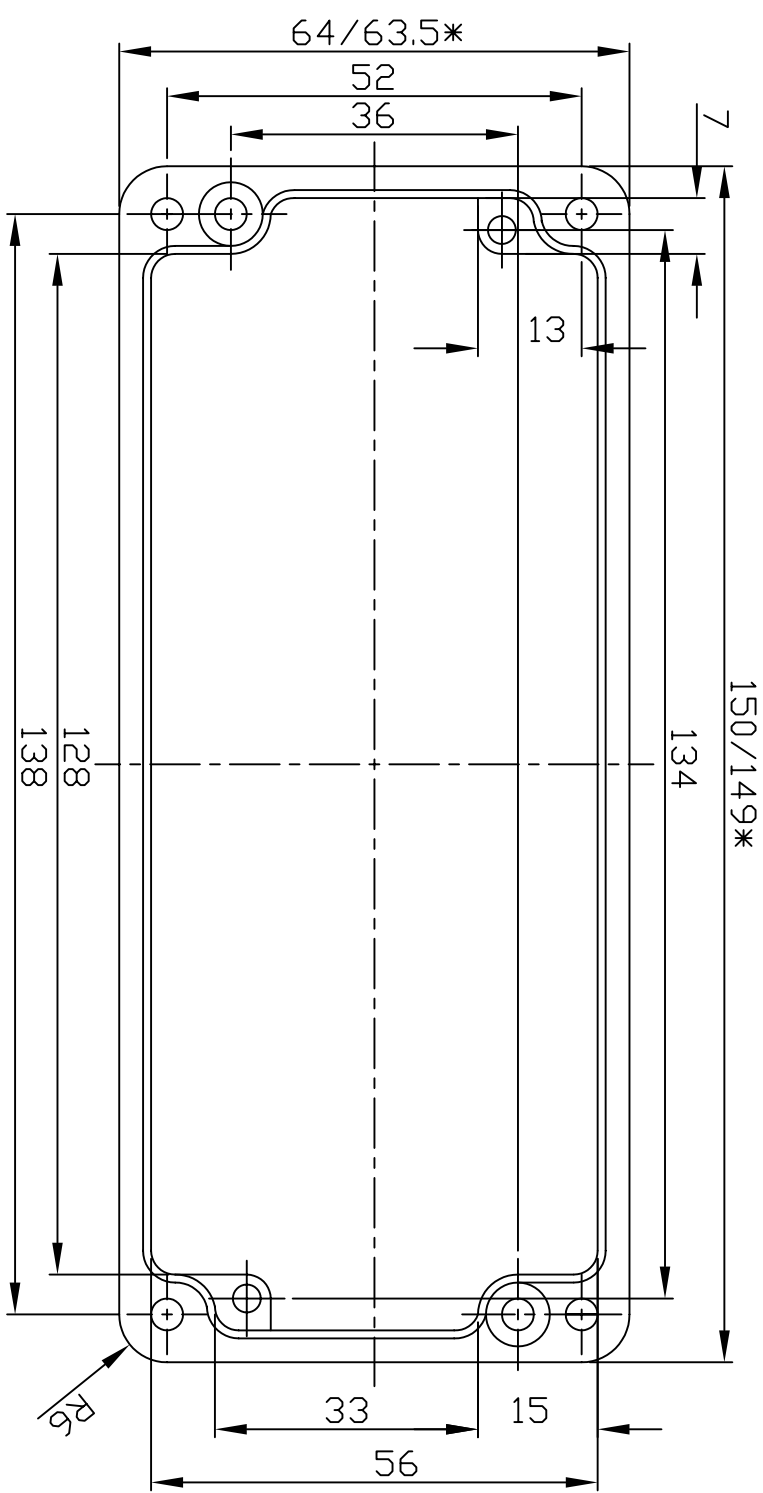


G113

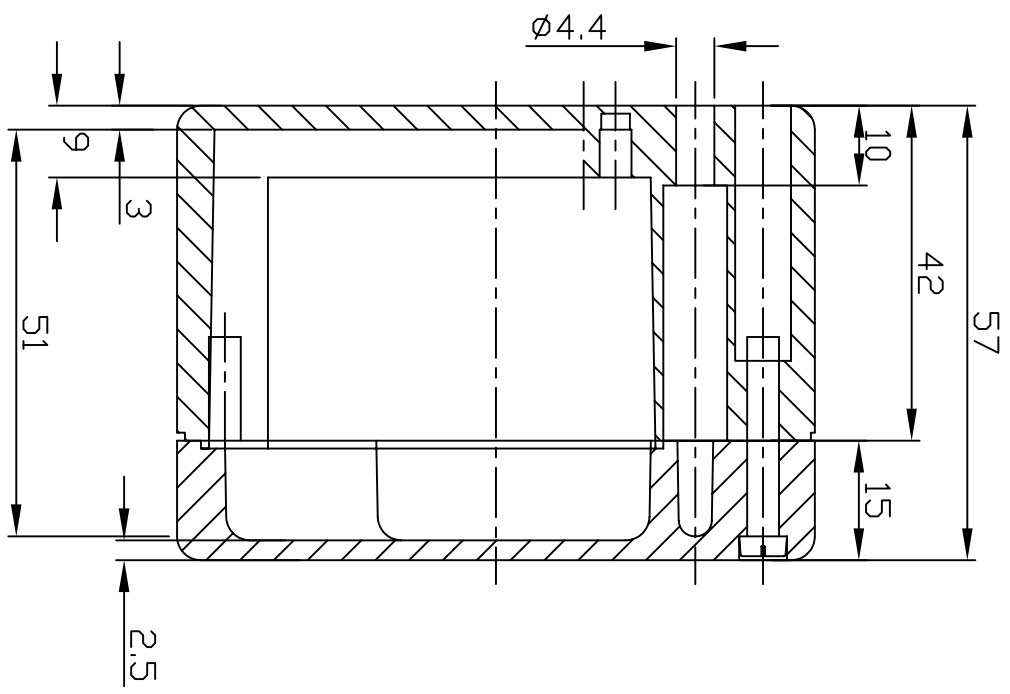
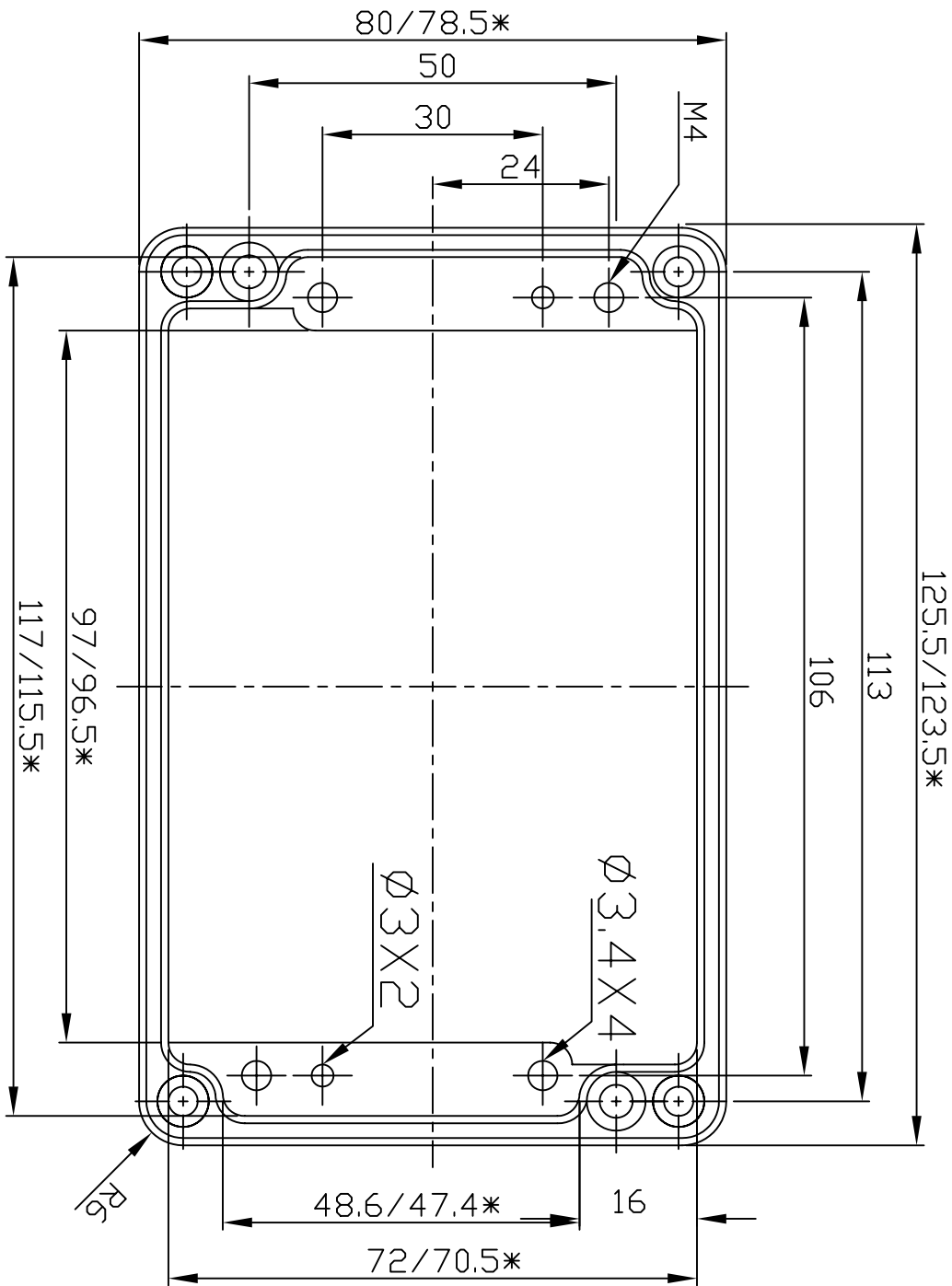


G1111

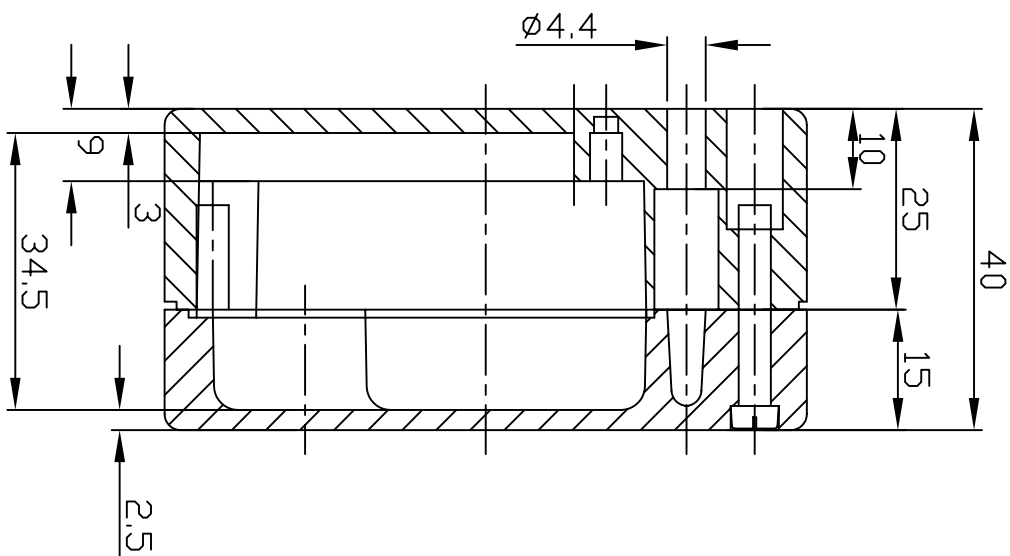
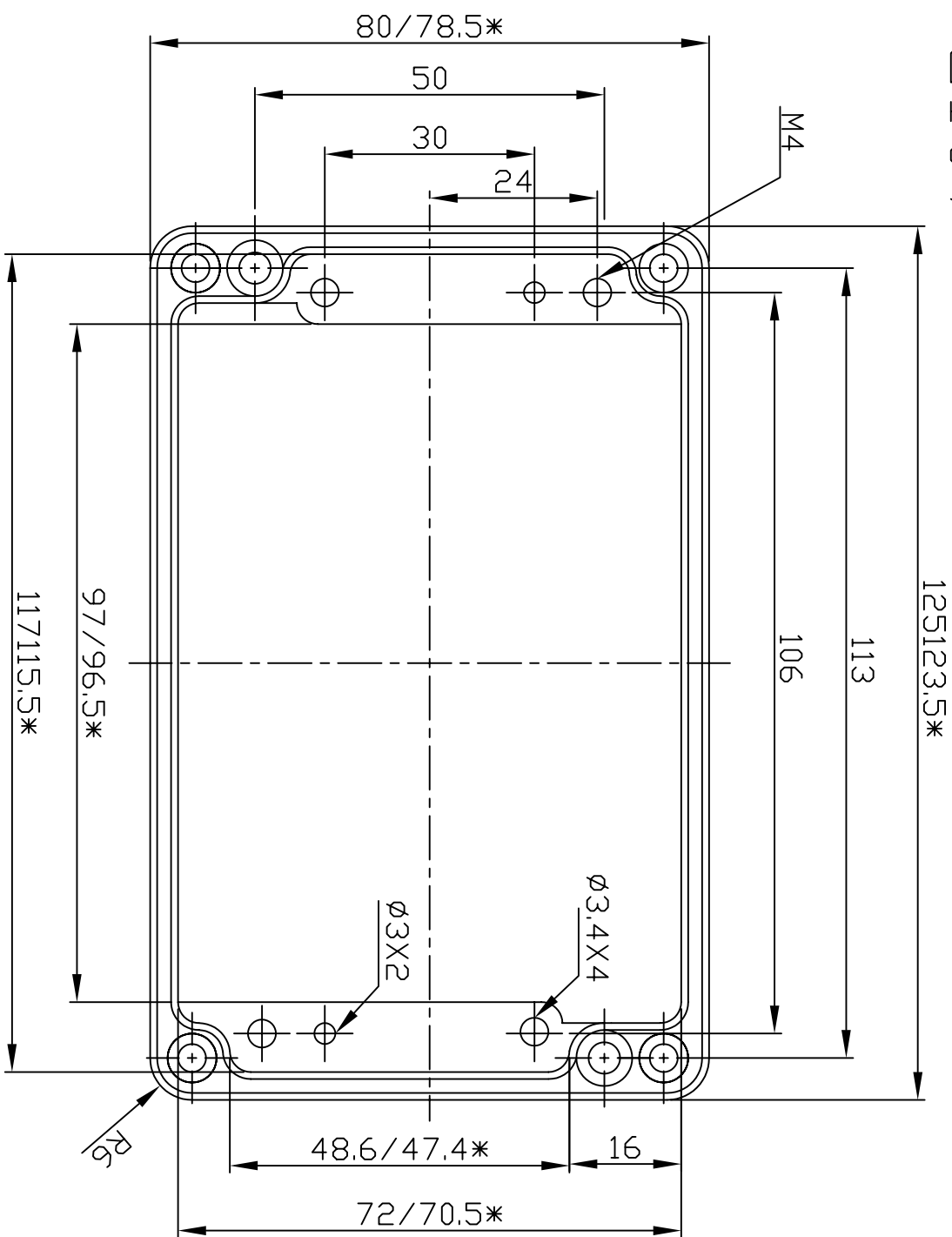




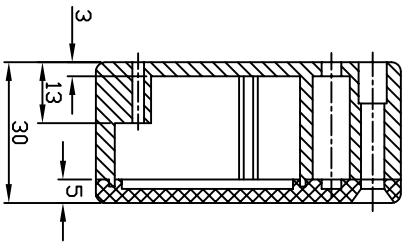
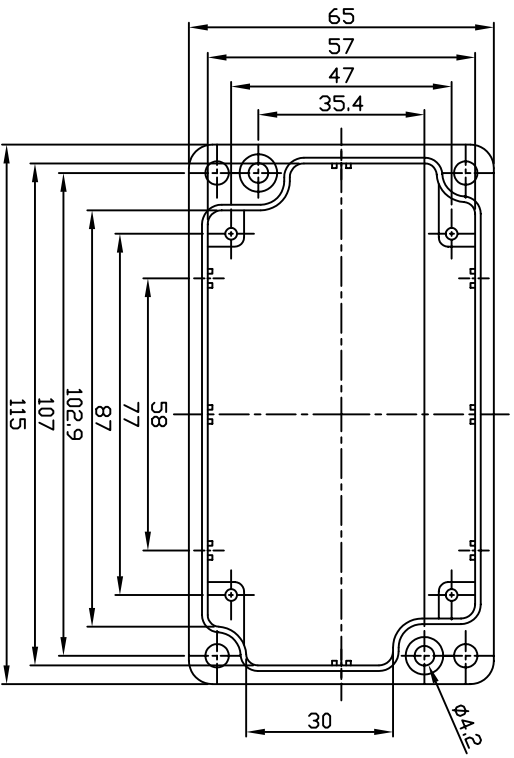
G108



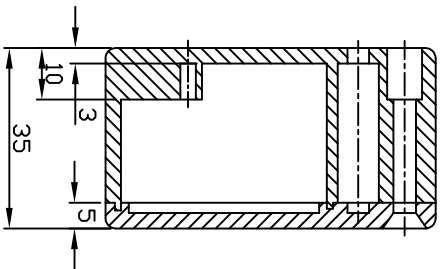
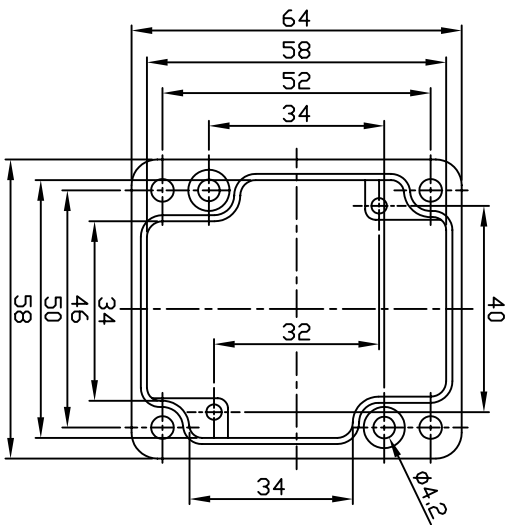
G107



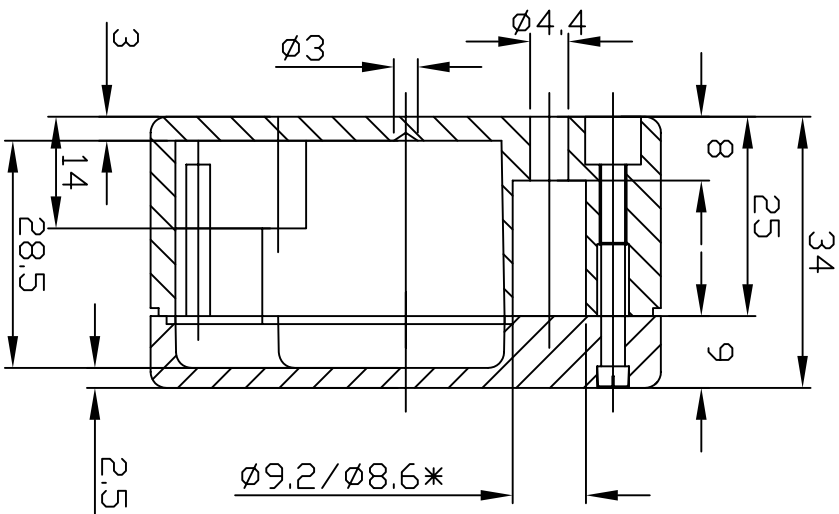
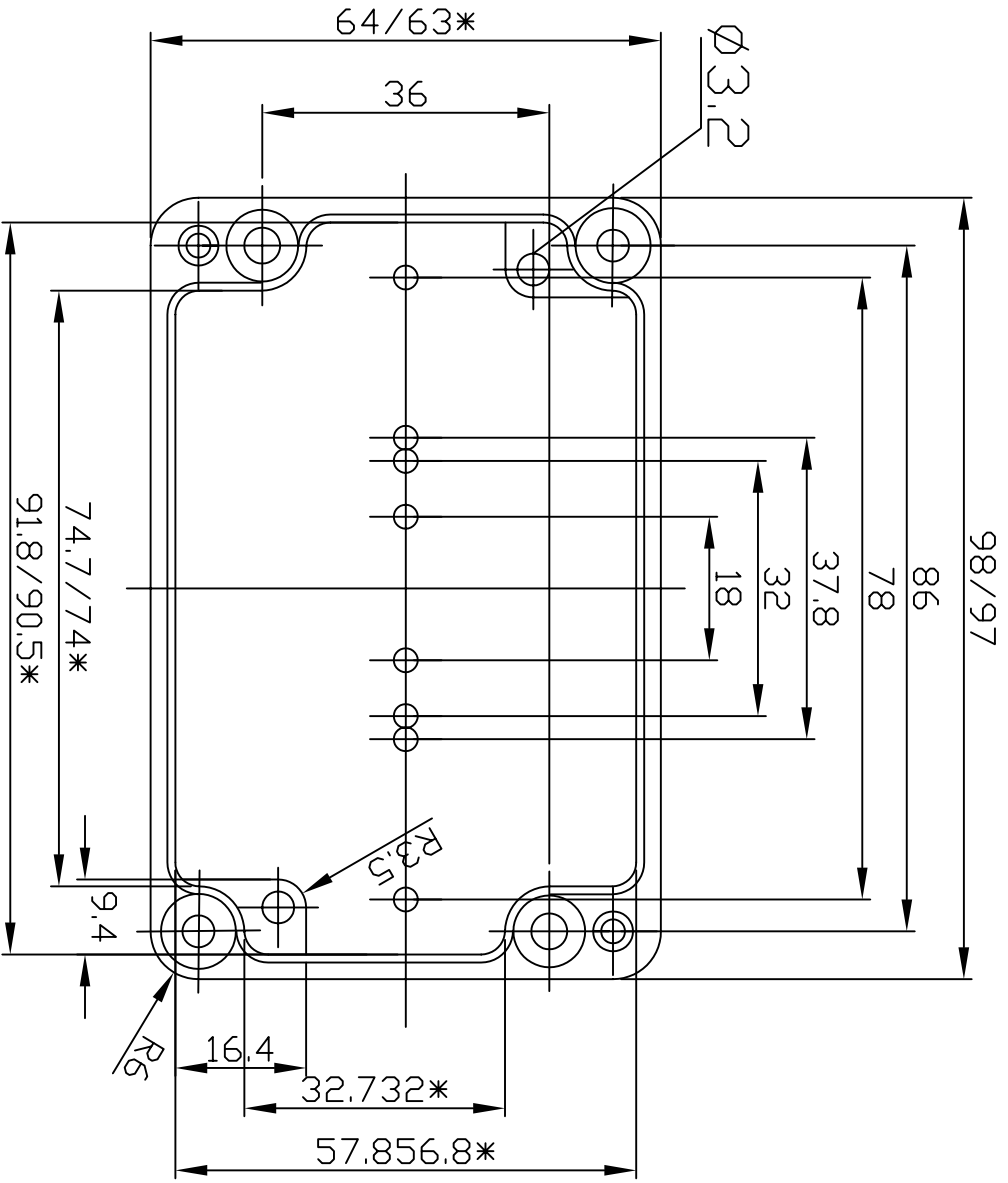
G106



G104

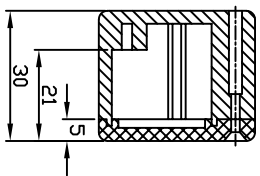
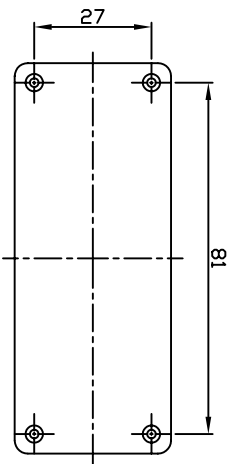
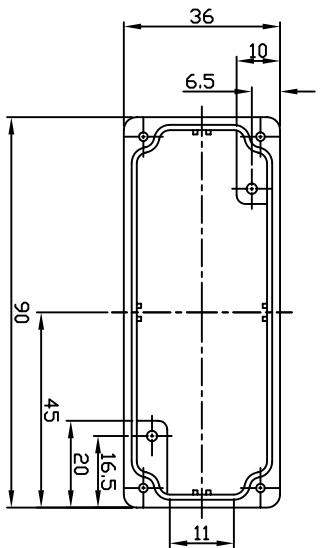


G103

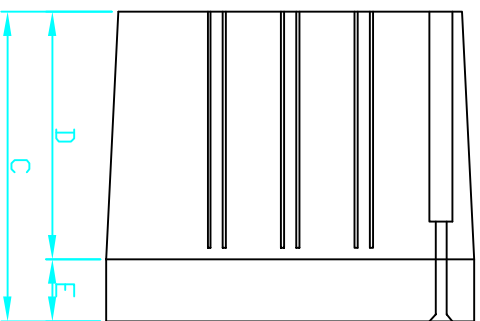
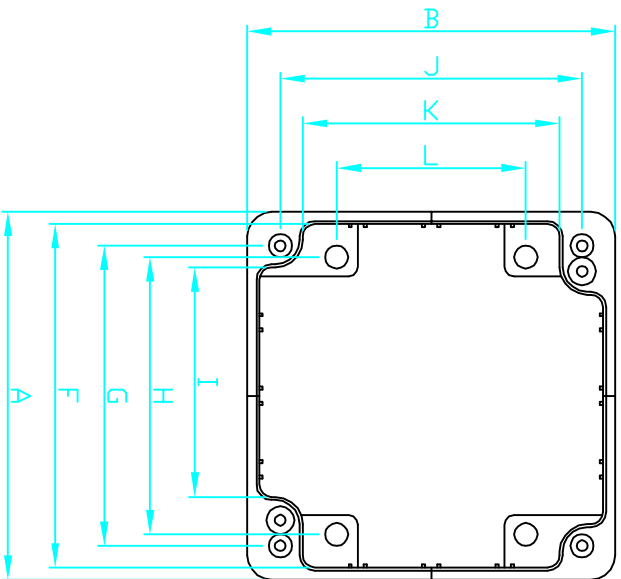




G102



# G137 & G139



PART NO.	A	B	C	D	E	F	G	H	I	J	K	L
G137	120.5	120.5	102.1	83.3	20.2	113.7	102.0	97.8	79.4	101.2	87.4	65.6
G139	158.5	158.5	101.7	82.7	20.2	155.0	139.7	108.7	117.2	139.7	125.5	108.7