



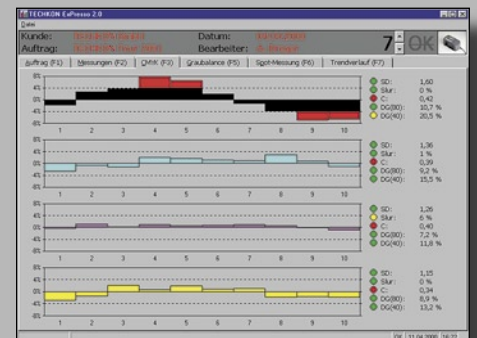
Scan-Measurement-Systems TECHKON RS 400 / RS 800



Scan-Densitometer RS 400 Scan-Spectrometer RS 800

- For automatic measurements of densities, dot gain and printing contrast
- Ink-zone specific control of printing presses
- Use also as a regular hand-held measuring device
- Works with any color control bar
- Scan-Spectrometer RS 800 particularly suitable for measuring spot colors
- RS 800 ideal for reading the FOGRA media wedge
- Very high measurement speed (max. 150 mm/s)

Windows-Software TECHKON ExPresso:



All Colors under perfect Control...

TECHKON®

The compact **Scan-Densitometer RS 400** and **Scan-Spectrometer RS 800** revolutionize automatic measurements of densities and dot gains on any print control strip, color wedge and test chart. Operation is easy: The ergonomically-designed measurement device fits securely in your hand. Quickly glide it over the print test strip. The different measuring fields and their position on the control strip are automatically recognized. Tracking wheels on the bottom of the device ensure a secure and straight run. On large-format print sheets, the device is slid along a guiding track.

The high measurement rate of eight measurements per millimeter guarantees accurate measuring results - even with very small color patches.

Two different models are at your choice: The Scan-Densitometer RS 400 finds its application preferably in 4-color printing and the Scan-Spectrometer RS 800 is especially designed for measuring spot colors thanks to its high-resolution spectral engine. Both instruments can also be used as standard hand-held devices for single measurements: Just position on the color patch, depress the measuring key - that's all ! Measuring on printing plates is just as easy.

High precision, reliability and ergonomic handling make the Scan-Densitometer and the Scan-Spectrometer valuable tools for quality printing.

TECHKON ExPresso

The Windows-software **TECHKON ExPresso** takes the measurement values of the device and displays the ink-zone specific density values at a glance on a computer screen. This permits precise control of printing machines, thus enabling shorter set-up times, less paper waste and exacting print quality.

Multiple functions - gray balance, trapping, tolerance settings and selection of standardization parameters - permit the application of the software for machine check-up and diagnosis.

The extended version **TECHKON ExPresso Pro** is designed for analyzing and displaying measurements of spot colors and is therefore the right combination for the Scan-Spectrometer RS 800 and a free serial port.

The TECHKON RS 800 spectrometer is particularly suited for colorimetric measurements of the FOGRA media wedge. Other test-wedges for linearizing digital printers and proof systems can be measured within seconds as well.

Linear Track LT

The optionally available motorized **Linear Track LT** features additional comforts. The operator no longer needs to manually manipulate the measuring device.

A magnetic coupling connects the measuring device to the cantilever of the linear drive. After fitting the print sheet and pressing the start-button, the measuring device automatically moves along the print control strip and returns to the starting position.

Measurement data are analyzed and displayed as usual using Windows-software TECHKON ExPresso or other programs designed for use with the measuring devices.

The motor-driven guiderail is easily mounted in minutes on any format proof table. The linear drive can be moved along two lateral metal strips on the proof table so that a print control strip can be reached on any spot on the print sheet.

The magnetic coupling lets you quickly separate the measuring device from the drive for spot measurements on any position on the print sheet.



Motor driven Linear Track LT

Specifications	Scan-Densitometer RS 400 / Scan-Spectrometer RS 800		
Measurement technology	RS 400: Density measurement with filters RS 800: Spectral remission measurement and color density determination to ISO 5-3/4 Spectral range 400 to 700 nm	Power supply	AC adapter 100-240 V / 47-63 Hz
Measurement geometry	0/45° optics to DIN 5033	Communication-Port	Serial RS 232, 115 kBaud
Measurement aperture	3 x 1,5 mm	Dimensions / Weight	HWL 50 x 75 x 135 mm / 350 g
Light source	Gas-filled lamp, type A illumination	Accessories	Measuring Plate MP Manual Guidance Track AS 52, AS 74, AS 102
Polarisation filter	Twice linear crossed, (optional without Pol.filter)		Software TECHKON ExPresso (RS 400)
Scan parameter	Scanning speed max. 150 mm/s, smallest width of measurement patch 3 mm		Software TECHKON ExPresso Pro (RS 800)
Density standards	RS 400: DIN 16536, (other filters optional) RS 800: DIN 16536, ISO/ANSI T, ISO/ANSI I, Dmax	Linear Track LT	Software TECHKON EXChange (for Excel-Export)
Density range	0.00 - 2.50 D	Scan length	520, 740 or 1020 mm
Repeatability	0,01 D	Scanning speed	approx. 150 mm/s
Inter-instrument agreement	0,01 D	Dimensions	LT 52: 28 x 60 x 810 mm LT 74: 28 x 60 x 1030 mm LT 102: 28 x 60 x 1310 mm

Specifications subject to change without notice. © TECHKON 03/2004