



# Measurement on Printing Plates with TECHKON DMS 910



## Digital MicroScope DMS 910

- For exact determination of
  - Dot percentage,
  - Screen ruling and -angle on printing plates and film
- Easy to use
- Universal application for various types of printing plates and raster processes (also FM-screenings)
- Ideal for calibration of CtP-platesetters

Includes Windows-Software  
DMS Pro:

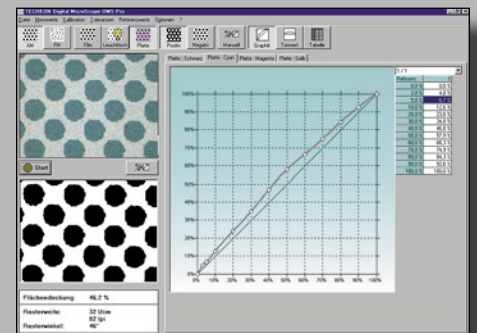


Plate Measurement right to the Spot !

**TECHKON®**

**TECHKON's Digital MicroScope DMS 910** lets you see things normally hidden to the human eye. The DMS 910 shows the raster dots on a film or a printing plate in large magnification on a computer screen. The Windows-Software **TECHKON DMS Pro** calculates exact values for dot percentage, screen ruling and screen angle using this digital image.

**How does it work:**

Position the measurement device by hand on the printing plate. The finder on the top of the device lets you exactly target the measurement sample. The measured section is displayed in high magnification on the PC screen. Press a button and the image is analyzed: the measurement values for dot area, screen ruling and -angle are displayed by the software DMS Pro. You can even elaborate a variety of raster processes (AM and FM raster) and resolutions.

Measuring on film is also a cinch. Simply place the film on white paper, then position the DMS 910 on the film. Analyze screened single-color measurement patches on printed sheet the same way.



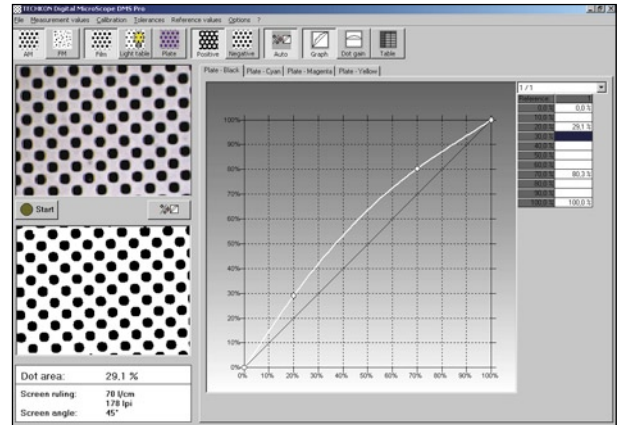
*Digital MicroScope DMS 910 is positioned directly on the printing plate*

By using a high-resolution digital camera module in combination with premium microscope optics and sophisticated image analysis software, the DMS 910 achieves previously unattainable measurement accuracy.

The solid design of the instrument without any mechanically moving components leads to high reliability and keeps it maintenance free.

TECHKON's DMS Pro software lets you record comprehensive measurement series for step wedges which, in turn, are used for calibrating film and plate imaging devices.

Magnified display on screen lets you visually judge a printing plate and discover any soiling or exposure errors now that the structure of the raster dots is visible. Analyze changes in dot shape in terms of dot spread as well as dot chain phenomena of the raster.



*The Windows-Software DMS Pro is included in the package*

TECHKON's Digital MicroScope DMS 910 is an indispensable aid for use with Computer-to-Plate systems. For readings on film and conventionally exposed printing plates, the DMS 910 is a highly accurate measurement tool that shows dot area apart from providing valuable information on the raster structure.

Specifications	Digital MicroScope DMS 910
Measurement process	Microscope with digital camera, illumination at 45°
Measurement values	Dot percentage, Screen ruling in l/cm and l/inch, Screen angle in degrees
Positioning	Visually, through finder
Finder size	ø 6 mm
Measurement size	0,7 x 1 mm
Connection to PC	Via USB-port
Dimensions / Weight	50 x 65 x 135 mm / 280 g
Software requires	Windows 98 / 2000 / XP
System includes	Digital MicroScope DMS 910 USB-cable Calibration standard CD with Software TECHKON DMS Pro Manual Carrying case

Specifications subject to change without notice. © TECHKON 03/2004