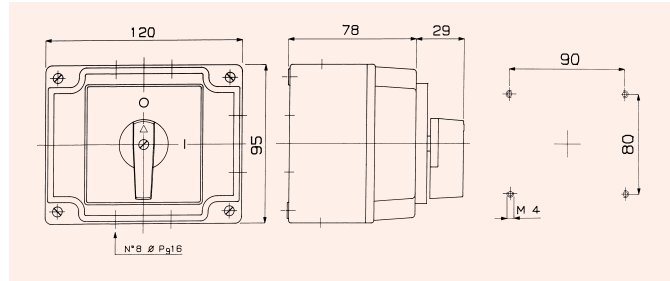


ENCLOSED

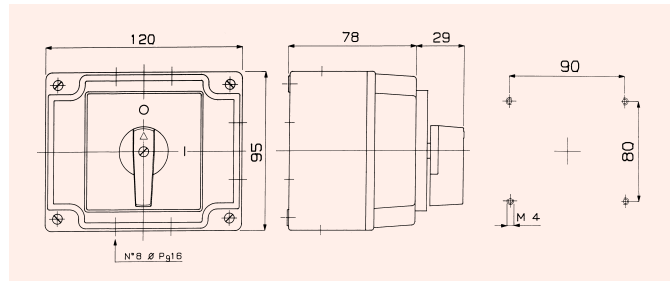
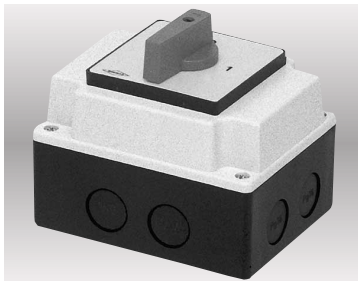
B1P
On-off switch with anodized grey plate, black knob mounted in plastic enclosure.

IP65



B1G
Emergency on-off switch with red knob and yellow plate, mounted in plastic enclosure.

IP65



ON-OFF SWITCHES

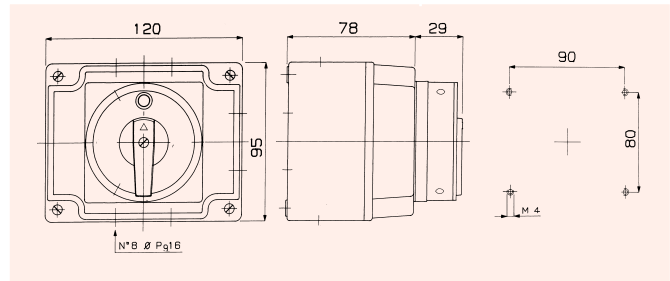
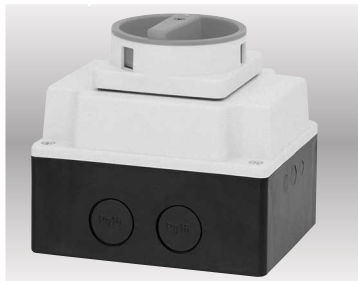
	03	04
B1P	3 Pole	4 Pole
CQ 012	CQ0120003B1P	CQ0120004B1P
CQ 016	CQ0160003B1P	CQ0160004B1P
	MOD.	MOD.

ON-OFF SWITCHES

	03	04
B1G	3 Pole	4 Pole
CQ 012	CQ0120003B1G	CQ0120004B1G
CQ 016	CQ0160003B1G	CQ0160004B1G
	MOD.	MOD.

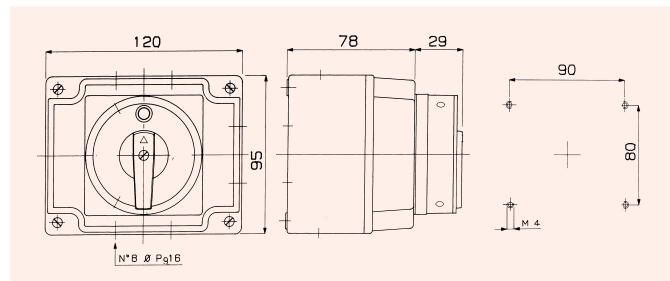
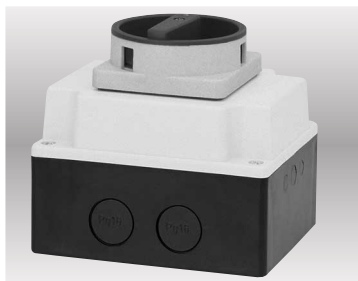
B1L
Main emergency on-off switch with padlock facility in 0 red knob and yellow plate, mounted in plastic enclosure.

IP65



B1N
Main on-off switch with padlock facility in 0 black knob and grey plate, mounted in plastic enclosure.

IP65



ON-OFF SWITCHES

	03	04
B1L	3 Pole	4 Pole
CQ 012	CQ0120003B1L	CQ0120004B1L
CQ 016	CQ0160003B1L	CQ0160004B1L
	MOD.	MOD.

ON-OFF SWITCHES

	03	04
B1N	3 Pole	4 Pole
CQ 012	CQ0120003B1N	CQ0120004B1N
CQ 016	CQ0160003B1N	CQ0160004B1N
	MOD.	MOD.