

### GENERAL VIEW, BASE MOUNTING

CQ 12-16

CQ 25-32

PLASTIC ENCLOSURE

- 48 E01
- 64 E06

On-off switch with door interlock device, anodized grey plate, black knob.

□48 E01



□64 E06



□64 E06



- 64 B1P

On-off switch with anodized grey plate, black knob mounted in plastic enclosure.

□64 B1P



- 48 EG1
- 64 EG6

Emergency on-off switch with door interlock device, red knob and yellow plate.

□48 EG1



□64 EG6



□64 EG6



- 64 B1G

Emergency on-off switch with red knob and yellow plate, mounted in plastic enclosure.

□64 B1G



- 67 XL6

Main emergency on-off switch with door interlock device, padlock facility in 0 red knob and yellow plate.

□67 XL6



□67 XL6



- 67 B1L

Main emergency on-off switch with padlock facility in 0 red knob and yellow plate, mounted in plastic enclosure.

□67 B1L



- 67 XN6

Main on-off switch with door interlock device, padlock facility in 0 black knob and grey plate.

□67 XN6



□67 XN6



- 67 B1N

Main on-off switch with padlock facility in 0 black knob and grey plate, mounted in plastic enclosure.

□67 B1N



- DDN

Switch for fixing on DIN rail for frame sets with 46mm, h 44mm; black knob, grey plate.

XN6

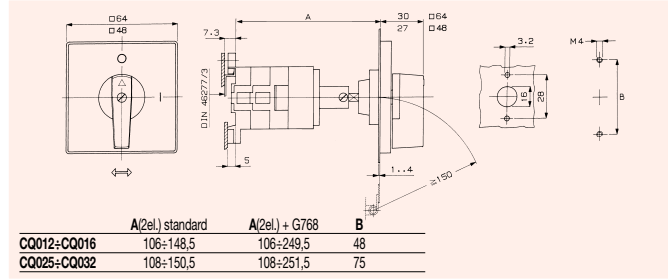


### BASE MOUNTING

- 48 EG1
- 64 EG6

Emergency on-off switch with door interlock device, red knob and yellow plate.

IP65



### ON-OFF SWITCHES



EG1

03

04

3 Pole

4 Pole

□48 CQ 012	<b>CQ0120003EG1</b>	<b>CQ0120004EG1</b>
□48 CQ 016	<b>CQ0160003EG1</b>	<b>CQ0160004EG1</b>
	MOD.	MOD.

EG6

03

04

3 Pole

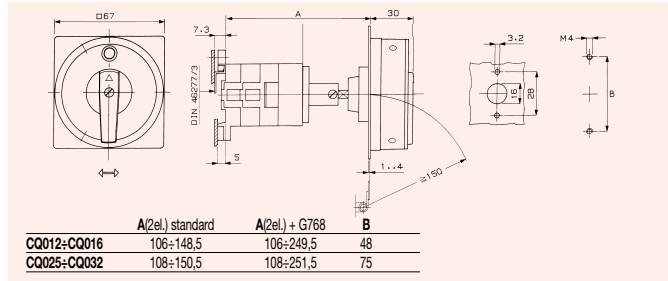
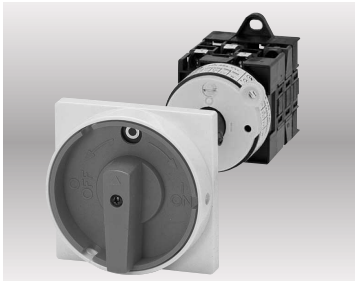
4 Pole

□64 CQ 012	<b>CQ0120003EG6</b>	<b>CQ0120004EG6</b>
□64 CQ 016	<b>CQ0160003EG6</b>	<b>CQ0160004EG6</b>
□64 CQ 025	<b>CQ0250003EG6</b>	<b>CQ0250004EG6</b>
□64 CQ 032	<b>CQ0320003EG6</b>	<b>CQ0320004EG6</b>
	MOD.	MOD.

- 67 XL6

Main emergency on-off switch with door interlock device, padlock facility in 0 red knob and yellow plate.

IP65



### ON-OFF SWITCHES



03

04

3 Pole

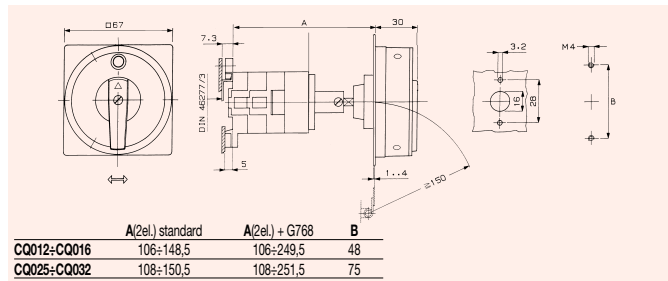
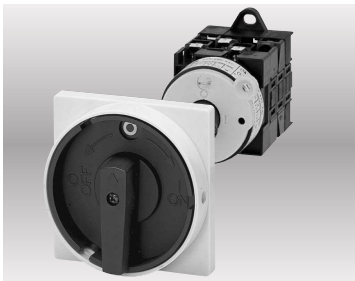
4 Pole

□67 CQ 012	<b>CQ0120003XL6</b>	<b>CQ0120004XL6</b>
□67 CQ 016	<b>CQ0160003XL6</b>	<b>CQ0160004XL6</b>
□67 CQ 025	<b>CQ0250003XL6</b>	<b>CQ0250004XL6</b>
□67 CQ 032	<b>CQ0320003XL6</b>	<b>CQ0320004XL6</b>
	MOD.	MOD.

- 67 XN6

Main on-off switch with door interlock device, padlock facility in 0 black knob and grey plate.

IP65



### ON-OFF SWITCHES



03

04

3 Pole

4 Pole

□67 CQ 012	<b>CQ0120003XN6</b>	<b>CQ0120004XN6</b>
□67 CQ 016	<b>CQ0160003XN6</b>	<b>CQ0160004XN6</b>
□67 CQ 025	<b>CQ0250003XN6</b>	<b>CQ0250004XN6</b>
□67 CQ 032	<b>CQ0320003XN6</b>	<b>CQ0320004XN6</b>
	MOD.	MOD.

### ORDERING PROCEDURE

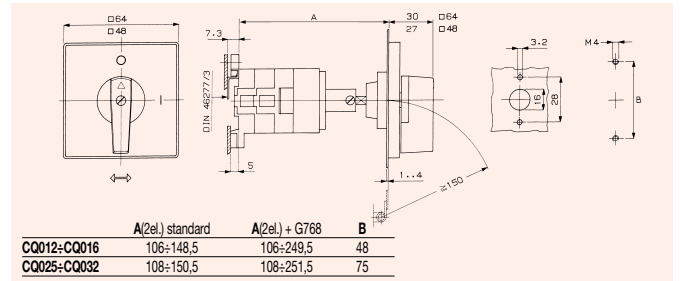
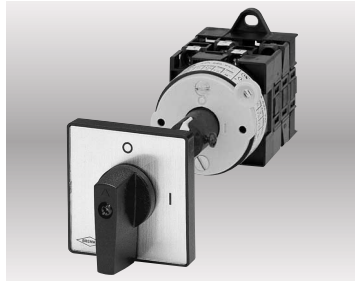
Order by product code.

### BASE MOUNTING CONTINUED

□48 E01

□64 E06

On-off switch with door interlock device, anodized grey plate, black knob.



### ON-OFF SWITCHES

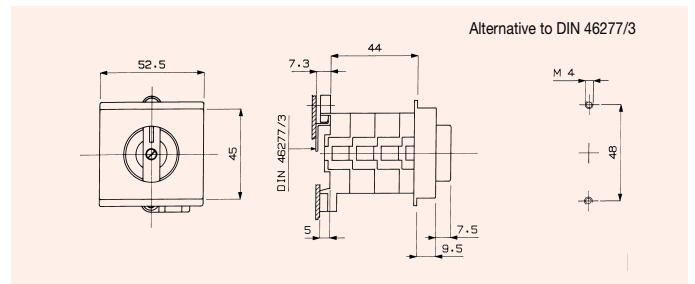
	E01	
	03	04
□48 CQ 012	<b>CQ0120003E01</b>	<b>CQ0120004E01</b>
□48 CQ 016	<b>CQ0160003E01</b>	<b>CQ0160004E01</b>
	MOD.	MOD.

	E06	
	03	04
□64 CQ 012	<b>CQ0120003E06</b>	<b>CQ0120004E06</b>
□64 CQ 016	<b>CQ0160003E06</b>	<b>CQ0160004E06</b>
□64 CQ 025	<b>CQ0250003E06</b>	<b>CQ0250004E06</b>
□64 CQ 032	<b>CQ0320003E06</b>	<b>CQ0320004E06</b>
	MOD.	MOD.

### DDN

IP65

Switch for fixing on DIN rail for frame sets with 46mm, h 44mm; black knob, grey plate.



### ON-OFF SWITCHES

	DDN				
	DN01	DN02	DN03	DN04	DN05
CQ 012	<b>CQ012DN01DDN</b>	<b>CQ012DN02DDN</b>	<b>CQ012DN03DDN</b>	<b>CQ012DN04DDN</b>	<b>CQ012DN05DDN</b>
CQ 016	<b>CQ016DN01DDN</b>	<b>CQ016DN02DDN</b>	<b>CQ016DN03DDN</b>	<b>CQ016DN04DDN</b>	<b>CQ016DN05DDN</b>
	MOD.	MOD.	MOD.	MOD.	MOD.

### ON-OFF SWITCHES

	CHANGE-OVER SWITCHES		
	DN06	DN07	DN08
CQ 012	<b>CQ012DN06DDN</b>	<b>CQ012DN07DDN</b>	<b>CQ012DN08DDN</b>
CQ 016	<b>CQ016DN06DDN</b>	<b>CQ016DN07DDN</b>	<b>CQ016DN08DDN</b>
	MOD.	MOD.	MOD.

### VOLTMETER CHANGE-OVER SWITCHES

	CHANGE-OVER SWITCHES	
	DN16	DN18
CQ 012	<b>CQ012DN16DDN</b>	<b>CQ012DN18DDN</b>
CQ 016	<b>CQ016DN16DDN</b>	<b>CQ016DN18DDN</b>
	MOD.	MOD.

### AMMETER CHANGE-OVER SWITCHES

	DN22
CQ 012	<b>CQ012DN22DDN</b>
CQ 016	<b>CQ016DN22DDN</b>
	MOD.