

TIME DELAY / CLASS L



HIGHLIGHTS:

- Time Delay
- Industry's Most Current-Limiting Class L Fuse
- Pure Silver Elements
- AC & DC Rated

APPLICATIONS:

- Mains, Feeders
- Large Motors
- Lighting, Heating & General Loads
- Circuit Breaker Back-up
- DC Rated: UPS DC Links, Battery Disconnects, Other DC Applications

*Please contact factory for special trigger actuator



PUT *THE* HIGHEST CURRENT-LIMITATION... AT YOUR SERVICE.

Amp-trap 2000® A4BQ fuses are 20% more current limiting than *any* other Class L fuse on the market. When correctly coordinated, they bring a superior level of protection to service entrance equipment. Downstream circuit components have maximum protection against short circuit let-thru current. A4BQ's built-in, 4-second time delay characteristic (at 500% of rated current) accommodates harmless inrush currents with no nuisance opening.

A

Features/Benefits

- **Fastest operation under short circuit conditions:** Let-thru currents are typically 20% lower, with a corresponding let-thru energy (clearing I^2t) up to 40% lower than the next fastest Class L fuse
- **Time delay for high inrush loads** such as motors and transformers, without nuisance opening
- **300kA interrupting rating** - self-certified, UL witnessed tests
- **Most current limiting** for lowest peak let-thru current; even at fault currents up to 300kA
- **Pure silver links** ensure lowest let-thru current and longer fuse life
- **Easy 2-to-1 selectivity** for prevention of nuisance shutdowns and "blackouts"
- **Rejection-style design** prevents replacement errors
- **High-visibility orange label** gives instant recognition
- **Reduced inventory** because A4BQ can replace all older types of Class L fuses now in service
- **Metal-embossed date and catalog number** for traceability and lasting identification
- **Fiberglass body** provides dimensional stability in harsh industrial settings
- **High-grade silica filler** ensures fast arc quenching

Ratings

- **AC:** 100 to 6000A
600VAC, 200kA I.R.
(self certified for 600VAC, 300kA I.R., UL witnessed)
4-second delay at 500% rating
Note: 100-600A ratings are non-listed
- **DC:** 601 to 3000A
500VDC, 100kA I.R.

Approvals

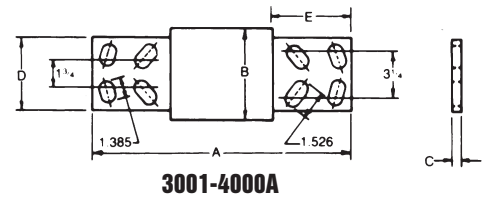
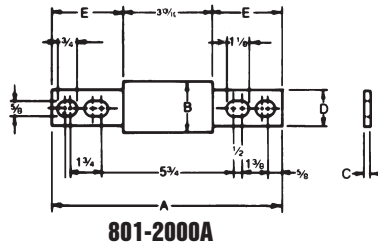
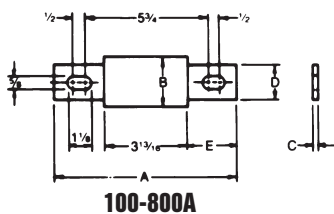
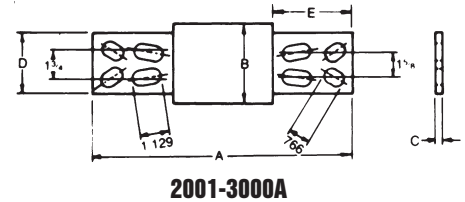
- UL Listed to Standard 248-10 (601-6000A)
- DC Listed to UL Standard 198L (601-3000A)
- CSA Certified to Standard C22.2 No. 248.10 (601-6000A)

TIME DELAY / CLASS L FUSES

A4BQ

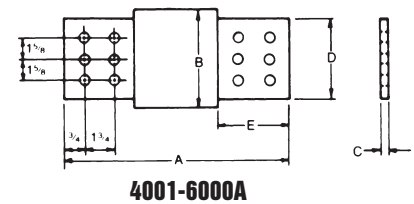
Standard Fuse Ampere Ratings, Catalog Numbers

AMPERE RATING	CATALOG NUMBER	AMPERE RATING	CATALOG NUMBER	AMPERE RATING	CATALOG NUMBER	AMPERE RATING	CATALOG NUMBER
100	A4BQ100	500	A4BQ500	1000	A4BQ1000	2000	A4BQ2000
150	A4BQ150	600	A4BQ600	1200	A4BQ1200	2500	A4BQ2500
200	A4BQ200	601	A4BQ601	1350	A4BQ1350	3000	A4BQ3000
250	A4BQ250	650	A4BQ650	1400	A4BQ1400	3500	A4BQ3500
300	A4BQ300	700	A4BQ700	1500	A4BQ1500	4000	A4BQ4000
350	A4BQ350	750	A4BQ750	1600	A4BQ1600	5000	A4BQ5000
400	A4BQ400	800	A4BQ800	1800	A4BQ1800	6000	A4BQ6000
450	A4BQ450	900	A4BQ900				



Dimensions

AMPERE RATING	A		B		C		D		E	
	In.	mm	In.	mm	In.	mm	In.	mm	In.	mm
100-600	8-5/8	219	2	51	5/16	8	1-5/8	41	2-13/32	61
601-800	8-5/8	219	2-1/2	63	3/8	9	2	51	2-13/32	61
801-1200	10-3/4	273	2-1/2	63	3/8	9	2	51	3-15/32	88
1201-1600	10-3/4	273	3	76	7/16	11	2-3/8	60	3-15/32	88
1601-2000	10-3/4	273	3-1/2	89	1/2	12	2-3/4	70	3-15/32	88
2001-2500	10-3/4	273	4-1/2	114	3/4	19	3-1/2	89	3-15/32	88
2501-3000	10-3/4	273	5	127	3/4	19	4	102	3-15/32	88
3001-4000	10-3/4	273	5-3/4	146	3/4	19	4-3/4	121	3-15/32	88
4001-5000	10-3/4	273	6-1/4	159	1	25	5-1/4	133	3-15/32	88
5001-6000	10-3/4	273	7-1/8	181	1	25	5-3/4	146	3-15/32	88



Safety Note: Class L fuses are dimensioned for one-way interchangeability. A Class L fuse of any lower ampere rating can be substituted for a given Class L fuse.

A4BQ (601 to 6000) Let-Thru Current in kilo-Amperes

Available Fault RMS AMPS	601		800		1000		1200		1600		2000		2500		3000		4000		5000		6000	
	RMS	Ip	RMS	Ip	RMS	Ip	RMS	Ip	RMS	Ip	RMS	Ip	RMS	Ip	RMS	Ip	RMS	Ip	RMS	Ip	RMS	Ip
10,000	7.4	17	8.7	20	10	23	10	23	10	23	10	23	10	23	10	23	10	23	10	23	10	23
15,000	8.3	19	10	23	12	27	13	30	15	35	15	35	15	35	15	35	15	35	15	35	15	35
20,000	9.1	21	11	25	13	29	14	33	17	39	20	46	20	46	20	46	20	46	20	46	20	46
25,000	9.8	23	12	27	13	31	15	35	18	42	22	50	25	58	25	58	25	58	25	58	25	58
30,000	10	24	13	29	14	33	16	37	20	45	23	53	29	66	30	69	30	69	30	69	30	69
35,000	11	25	13	30	15	35	17	39	20	47	24	56	30	69	35	81	35	81	35	81	35	81
40,000	12	27	14	32	16	37	18	41	21	49	25	58	31	72	36	83	40	92	40	92	40	92
50,000	13	29	15	34	17	40	19	44	23	53	27	63	34	78	39	89	48	111	50	115	50	115
60,000	13	30	16	36	18	42	20	47	25	57	29	67	36	83	41	94	51	118	60	138	60	138
80,000	14	33	17	40	20	46	23	52	27	62	32	73	40	91	45	104	57	130	67	153	77	176
100,000	16	36	19	43	22	50	24	56	29	67	34	79	43	98	49	112	61	140	72	165	83	190
150,000	18	41	21	49	25	57	28	64	33	77	39	90	49	112	56	128	70	160	82	189	94	217
200,000	20	45	24	54	27	63	31	71	37	84	43	100	53	123	61	141	77	176	90	208	104	239

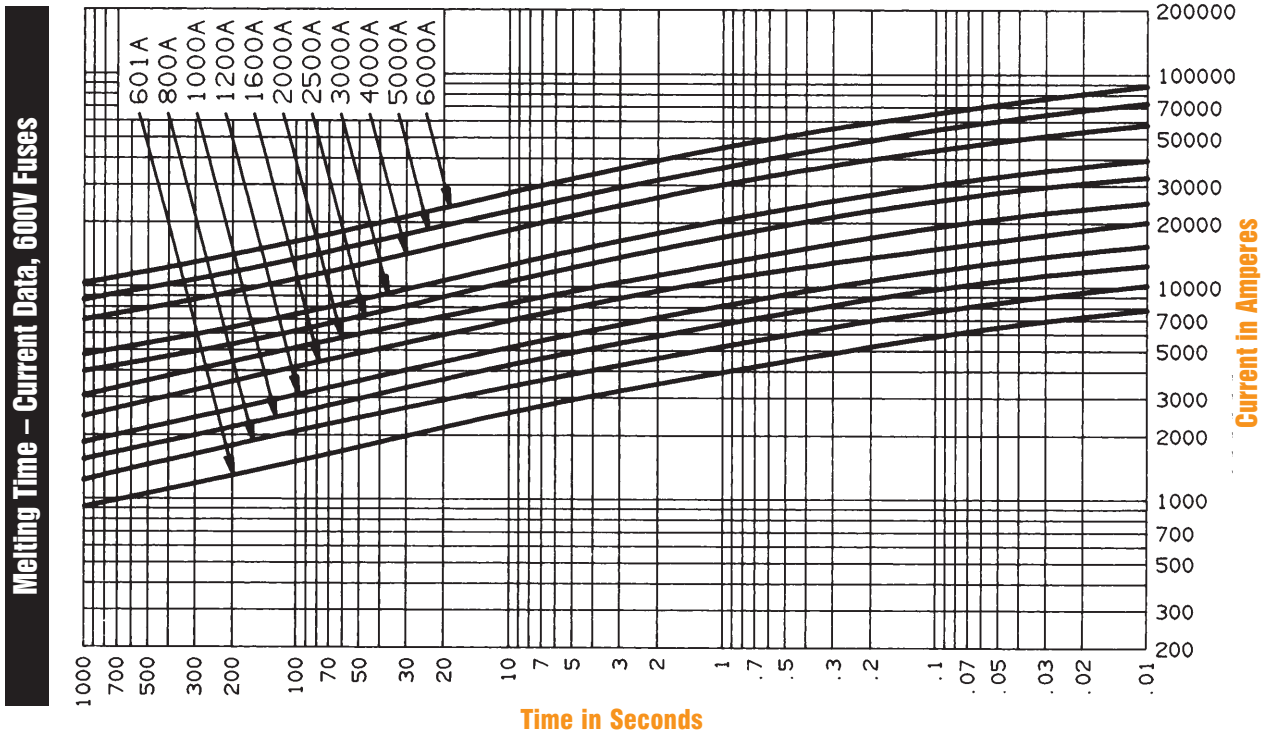
The current limiting effect of A4BQ Class L fuses is presented in the table above. This table correlates actual fuse peak let-thru currents with equal value peak currents reached in the first half cycle (worst case) of short circuits in unfused circuits. The let-thru current is expressed as "Apparent RMS Symmetrical Amperes" in order to be more useful for practical applications. The currents are based on an assumed 15% power factor. Example: An A4BQ1200, when applied in a circuit with 40,000 RMS symmetrical amperes available, will limit that current during a short circuit, to an apparent 18,000 RMS symmetrical amperes. Under this condition, any equipment being protected would be subjected to only 18,000 RMS amperes.

TIME DELAY / CLASS L FUSES

A4BQ



A4BQ601 to 6000



Peak Let-Thru Current Data - A4BQ601 to 6000, 600 Volts AC

